



www.lutherpark.com

ECHOES

From The Point

CHANGE SERVICE REQUESTED

Vol. 24, No. 2

A Newsletter for Campers and Friends of Luther Park

Fall/Winter 2013-2014

Summer Camp Theme for 2014 Celebrates 'Living in God's Time'

By Sharon F. Miller
Writer/ Editor

“We're excited about the summer camp theme for 2014,” said Executive Director Joel Legred. *“Living in God's Time”* says exactly what Luther Park Bible Camp is all about!”

The theme verse is: **“For everything there is a season, and a time for every matter under heaven.”** ~ Ecclesiastes 3:1.

This curriculum teaches: **“At camp, time is holy—time set apart to live in intentional Christian community.** Just as time at camp may be marked differently, time is marked differently for Christians. In Jesus, we see God living among us and we learn of a different way of marking time.

Each day of camp, we will focus on a different season of the church year as we learn about the story of Jesus.”

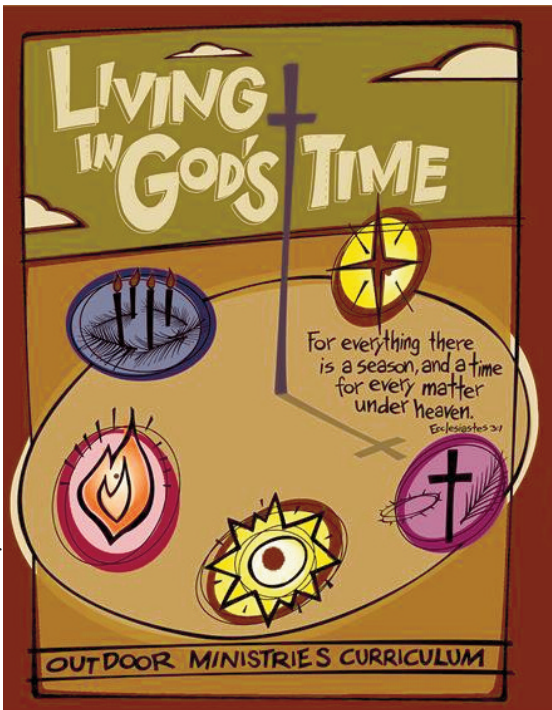
- * Day 1: Living in Advent - John the Baptist
 - * Day 2: Living in Christmas - The birth of Jesus
 - * Day 3: Living in Lent - The crucifixion of Jesus
 - * Day 4: Living in Easter - The resurrection of Jesus
 - * Day 5: Living in Pentecost - The Holy Spirit
- Camp teaches the Gospel to youth while at the same time introducing them to the wondrous beauty of nature and the outdoors. Camp provides a special way of opening children's eyes, minds and hearts to a whole new future of endless possibilities.

Of course, there's still plenty of time for outdoor/indoor traditional camp fun and adventure, including evening campfires, singing, swimming, canoeing, games, ropes course, and more.

God touches lives often and in many ways at Luther Park. Camper's experiences and relationships can have a profound effect on their future. Luther Park provides a perfect opportunity to make a long-lasting and positive impact.

Here's what some of our 2013 campers have to say about their experiences:

- * *I leaned you don't need to act or look a certain way for God to care about you.*
- * *Luther Park was just super fun with awesome staff and awesome games.*
- * *God includes everybody and loves those who aren't loved by others.*
- * *I really thought it was great how this is my fifth year coming to Luther Park and each time seems to get better and better.*
- * *Luther Park is a fun, faith-filled adventure.*
- * *I love the people here and how we learn about God.*
- * *God is always with you and trying to pull you towards Him, even at tough times.*



Pastor Todd Buegler, Lord of Life, has this to say about camping at Luther Park: *“I have been a camper and staff member at Luther Park. Now, I bring young people there as a pastor and as a parent. I've seen firsthand the Holy Spirit transforming the lives of young people at camp.”*

As you look back on the joys and experiences of past summers and look forward to all the opportunities awaiting you at summer camp 2014, be sure to consider the newest adventurous camp program offering: **NIGHT OWL CAMP!!!** (Cont. on P. 2)

Look INSIDE For

- * 2014 Summer Camp Info.
- * Quilt Auction Outcome
- * Outstanding Christian Service Awards to Bob Kresse & Diamond Lake Group and Roger & Kathy King, Nativity
- * ... AND MORE!

COMING EVENTS



- DEC. 6** Glad Tidings Dinner & Silent Auction
 - FEB. 6-9** Scrapbooking & Stamping Weekend II
 - or FEB. 7-9** Annual Mtg. Elim Luth.
 - MARCH 16** 3978 W. Broadway N. Robbinsdale, MN 54422
 - APRIL TBA** Ole & Lena Event, Richfield Lutheran
 - JUNE 7-8** Bikeathon
 - JUNE 8-20** Summer Staff Training
 - JUNE 15** Summer Camp Starts
 - JULY 2-6** Family Camp
 - JULY 4-6** Family Camp
 - JULY 18-19** Bikeathon II
 - JULY 19** Open House
 - AUG. 1-4** Sr. High Leadership Camp
 - AUG. 4-7** Jr. High Leadership Camp
- All events take place at Luther Park unless otherwise noted.

A New Adult & Family Retreat Center

THE NEED

New facilities to serve family groups and adults of all ages. Although the current buildings serve youth campers well, they are not suited for the specific needs of adults, families, and intergenerational groups.

To better serve people of all ages and physical abilities throughout the year, Luther Park must add a building that meets their needs. This includes:

- * Private hotel-style rooms
- * Flexible, comfortable meeting spaces

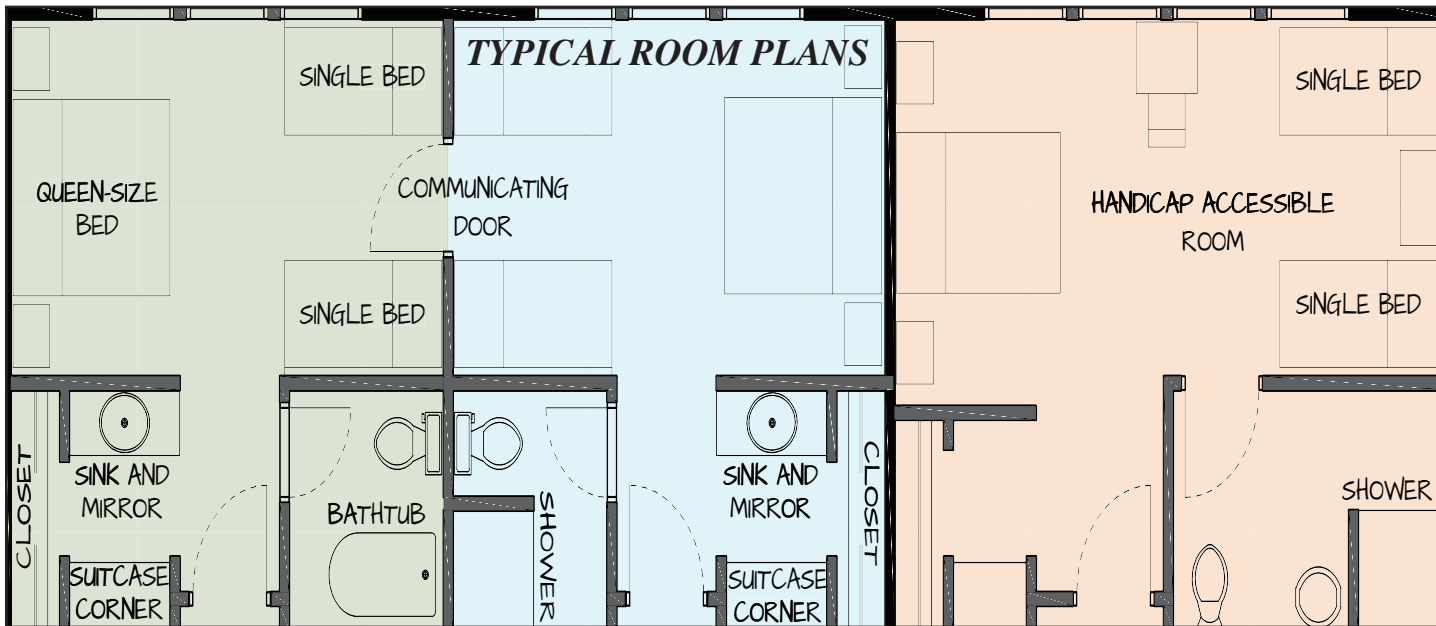
THE PLAN

When this 18,516 square-foot, two-level building is completed, Luther Park's ministry will increase dramatically. To add this building as soon as possible, the Adult and Family Retreat Center will be constructed in phases,

PHASE ONE COST AND GOAL: \$850,000

Components:

- * Twelve private sleeping rooms serving 48 people
 - * Two welcome lounges for gatherings or casual meetings
 - * Reception area
 - * Two public bathrooms
 - * Laundry, storage and mechanical rooms
- (Cont. on P. 2)



GLAD TIDINGS ADVENT DINNER FRIDAY, DEC. 6

The Glad Tidings Dinner and Silent Auction is a popular event that you won't want to miss. This 13th Annual Dinner Celebration is a great time together with your Luther Park friends and neighbors.

Come and enjoy a relaxing time of fellowship, food and Silent Auction fun. Appetizers and a luscious dinner will be served with all the trimmings.

Special music and special people add up to a special evening that many look forward to each year.

- WHERE:** Dining Hall, Luther Park
- WHEN:** Friday, Dec. 6, Social hour, 5 pm, Dinner at 6 pm
- COST:** \$14 for adults
- SILENT AUCTION:** Donated items. Do some early Christmas shopping while benefiting Luther Park.
- CONTACT:** Joel Legred at 612.987.6628 or email jlegred@lutherpark.com.

**A Message
From the
Executive
Director**

Janet Nelson



**About Luther Park and
it's Member Churches**

It was a successful summer at Luther Park. Many campers enjoyed renewing old friendships and making new ones, singing camp songs around the campfire, worshipping in the outdoors, and strengthening their faith in God.

Now fall has arrived at Luther Park. It is a beautiful time of year, with the crisp mornings, sunny days, cool evenings, and the autumn colors.

I have spent many falls at Luther Park on retreats, and it is a wonderful place to revel in God's outdoor creations.

I am so thankful that Elim, the church in which I was raised,

and where I still belong, had a part in Luther Park's beginning in 1959.

Elim was one of the 14 founding churches that committed to the importance of outdoor ministry and joined together to purchase the land for Luther Park. Cabins were built, the Lodge became a reality, and the rest is history!

Churches have sponsored some cabins to help with cabin upkeep and renovations. Elim has sponsored Elm cabin for many years. Members raised money for new windows several years ago, and are now fundraising for the complete renovation of Elm's interior and new roof.

Churches raise money for Luther Park in a variety of ways. We have two Luther Park breakfasts a year at Elim to raise money for camper scholarships to

Elim youth, and also to raise funds for Elm cabin. We also have a silent auction at one of the breakfasts. Members contribute theme baskets for the auction. Elim's quilting group donates many quilts to the annual Quilt Auction which raises money for camp scholarships. Elim's Foundation has also given money to Luther Park in the past.

Elim's commitment to Luther Park has continued through the years since 1959, even as pastors have retired and new ones have taken the reigns.

Our current senior pastor, Chris Enstad, sees the importance of outdoor ministry. He says, "Outdoor ministry is key to the future of the church. Over 75 percent of pastors have had a camping experience sometime in their formative years. Speaking for myself, my own call to ministry came while working at a church camp! God works at all times and in all places, but there's something special about a place like Luther Park where young adult counselors who love Jesus come together with our church youth in the name of Christ."

Our Associate Pastor, Marcia Rosa, agrees that outdoor ministry is a key to faith formation in youth. Elim's youth who have attended camp say, "It was so much fun!" and "I made new friends!" and "I felt closer to God

at Luther Park."

So remember to lift up Luther Park in your congregations! Have a Luther Park Sunday where Executive Director Joel Legred or another representative of Luther Park can come and talk to your congregation about the camp.

Encourage your pastors and youth directors to bring youth for retreats to Luther Park. Men's and women's groups can have retreats there as well! Come and enjoy the beauty of God's creations at Luther Park!

God Bless,

Janet Nelson
Luther Park Board President



New Adult & Family Retreat Center

(Cont. from P. 1)

Luther Park is now raising funds required for Phase One from individuals, families, congregations and foundations. If you are interested in supporting this fundraising effort, please contact Executive Director Joel Legred at 612.987.6628 or e-mail jlegred@lutherpark.com.

7 Reasons to Support This Project

1. You will say "thank you" for God's **BLESSINGS** in your life.
2. You will **INSPIRE** others by your support of Luther Park's ministry.
3. You will help **BUILD** a much needed facility for Luther Park's congregations.
4. You will **STRENGTHEN** church programs for youth/families.
5. You will **PROVIDE** a place for year-round retreat programing.
6. You will make Luther Park more **WELCOMING** for people of all ages.
7. You will **BUILD FAITH** for the future through Luther Park's exciting programs

NAMING & MEMORIAL OPPORTUNITIES

PHASE ONE

- The Family Retreat Center \$200,000
- Worship & Gathering Space \$40,000
- Guest Rooms with Private Baths (12)..... \$25,000 ea.
- Welcome Lounges with Fireplaces (2) \$15,000 ea.
- Reception Area \$15,000

PHASE TWO

- Great Room.....\$100,000
- Recreation Center..... \$50,000
- Meeting Rooms (2)..... \$30,000 ea.
- Guest Rooms with Private Baths (12)..... \$25,000 ea. 🏠

Summer Camp 2014

(Cont. from P 1)

During Night Owl Camp, campers will experience all of the fun of a traditional camping session in a whole new way.

By staying up late and sleeping in each morning, campers will be able to explore the wonders of the natural world, its sights, creatures, and sounds that often go unnoticed during the day.

Night Owl campers sleep late, have breakfast around lunchtime, enjoy lunch at dinner and cook out a delicious dinner late in the evening. Games, night hikes and Christian education will have a fresh feeling as campers learn more about themselves, God and each other through story-telling and discussion around the campfire, under the stars.

If you are interested in this new offering, check out the 2014 Summer Camp Schedule on Page 6. This is sure to be a popular program, so don't wait too long. Save \$50 by registering by Dec. 31, or save \$25 if you register by March 1. 🏕️

ATT'N SNOWBIRDS... OR OTHER TRAVELERS!!!



WILL YOU BE TEMPORARILY AWAY FOR THE WINTER BUT DON'T WANT TO MISS ANY LUTHER PARK NEWS?

TO HAVE YOUR MAIL FORWARDED TO YOUR WINTER ADDRESS, PLEASE CONTACT THE CAMP OFFICE AT 715.656.7244 OR E-MAIL: CAMP@LUTHERPARK.COM

It saves Luther Park money, because bulk mail is not forwarded and we must pay for all mail that is returned to us. THANKS!

Luther Park ECHOES From the Point

is published by the Luther Park Corporation, a non-profit organization affiliated with congregations of the Evangelical Lutheran Church in America (ELCA) and other Lutheran congregations to share the news and ministry of Luther Park Camping and Retreat Center with campers and friends of Luther Park. The camp is located at 30376 Lakes Drive, Danbury, WI 54830-9508.

Editor/Writer/Designer/Photographer:
Sharon F. Miller, Miller Creative Communications

Pictures, information and opinions are welcomed and encouraged. Call or send to: Sharon F. Miller, Editor, Luther Park ECHOES From the Point, 6712 Pleasant Av. S., Richfield MN 55423, 612.869.4997.

YEAR-ROUND STAFF MEMBERS

Retreat Host/Summer Prog. Dir. **Tara Jo Hill** Executive Director **Joel Legred**
Kitchen/Food Coordinator **Arlene Miller** Office/Registrar **Anna Treague**



www.lutherpark.com

Write: 30376 Lakes Drive,
Danbury, WI 54830

Phone: 715.656.7244

facebook: www.facebook.com

lutherparkbiblecamp

E-mail: camp@lutherpark.com



Shown above are some of the group of Diamond Lake volunteers who recently received Luther Park's Outstanding Christian Service Award for their volunteer work at Luther Park including the renovation of Pine cabin. From L. to R. are Caroline & Kurt Boston, Cyndi & Bob Kresse, Kirk & Kathi Gallup, Graydon Royce, Robb & Lisa Bass, Frank Anderson, and in the foreground is Pastor Mark Orvik (See story on Page 7).

LUTHER CALVARY SCRAP



Someone's either coming or going at camp, and Mom's guarding the precious, essential gear.

Happy campers all cleaned up and ready for a banquet.



Shown above, summer staff 2013 is gearing up on the river. Group trips may be arranged thru St. Croix rivers. Great for



Luther A Place for A Place for Mission S

Luther Park is a cooper congregations serving peo variety of programs in an o is to provide an environme faith may be strengthened an personal relation

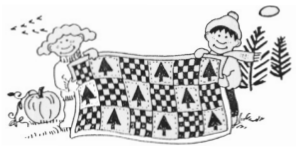
If you get up real early you can personally enjoy the calm spirituality of this scene on Lake 26. A great way to start the day.



Seventh-grade retreaters from Mount Calvary in Excelsior were all smiles as they showed off their Luther Park Frisbees during a pause from retreat activities.



LUTHER PARK CAMP HANDBOOK



Fall/Winter 2013-2014



Family fun galore is available at the waterfront. This father and son found kayaking to be a great experience together during Family Camp.



Get up for some staff bonding via a canoe trip throughout the summer on the Namekagon and for both novices and experts!



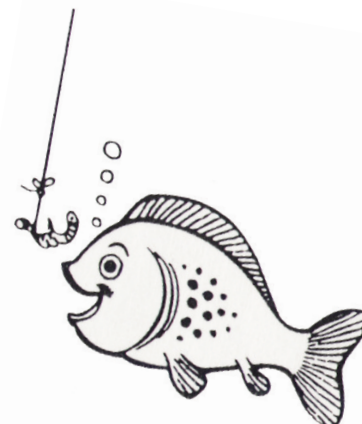
"Quick, act silly. He's taking our picture!"

Luther Park for All Ages... for All Seasons Statement

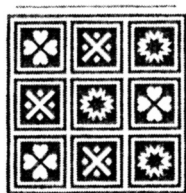
operative ministry of ELCA
people of all ages through a
in outdoor setting. Our mission
ment in which the Christian
d and people may grow in their
relationship with God.



Enjoying s'mores together around the campfire, is one of the special joys experienced at Luther



Hey, I'm
all set to
go!
Where's
the
water?



A Pattern of love and caring creates another successful Quilt Auction

By Sharon R. Miller
Writer/Editor

Although we've already picked up all the pieces and carefully put everything away from the 24th Annual Quilt Auction, a wonderful patchwork of memories remains for all who were involved.

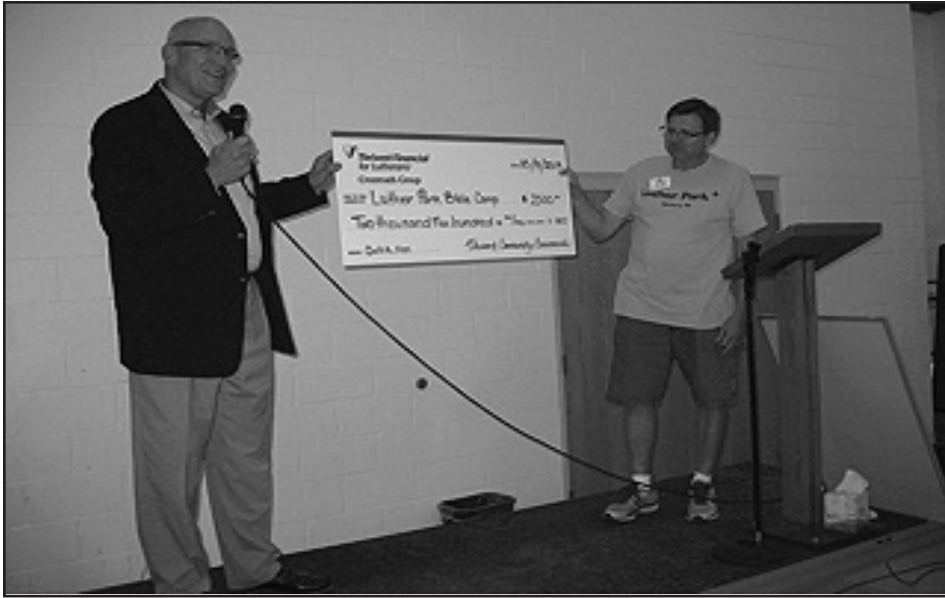
The same goes for Mount Calvary in Excelsior, who once again graciously hosted the event and the lunch by the Mount Calvary women's group. Thanks also to the many Luther Park supporters who attended and purchased items. And of course, many thanks to auctioneer Sarah Jean Knox who so ably led the bidding. Thanks for all your love

scholarships! About \$7,000 was generated by the auctions, raffle and lunch. Luther Park was additionally blessed with a matching gift of \$2,500 from the Thrivent Crossroads Group, and \$750 from the West Hennepin Chapter of Thrivent.

Executive Director Joel Legred said, "Many thanks to both groups for this

The continued dedication and creativity of Luther Park's volunteers and supporters is legendary—and the core of the Quilt Auction's success—even after 24 years. For this we are very grateful to all of our faithful friends.

If you would like information on how to get involved as a quilter or volunteer, please



Bill Eggers is shown at left delivering a check from Thrivent Crossroads Group for a matching grant of \$2,500 to Executive Director Joel Legred for the very successful Luther Park Quilt Auction at Mount Calvary Lutheran Church in Excelsior.

The warm and caring hands of quilters, knitters and crocheters, those setting up and taking down displays, our Task Force, planners, organizers, kitchen helpers, and dozens of other volunteers worked untold hours just to get to the day of the auction. Then again on the big day and even after that—counting, bagging, tracking sales, cleaning up and putting away—and on and on. You can never receive enough thanks!

and care in making this another great success.

The lively auction moved along quickly. Ninety-four items were in the live auction with 54 bidders. Thirty-two of the 54 bidders took home one or more items from the live auction. Some also took home items from the silent auction which included a variety of items.

Over \$10,000 was raised for camp



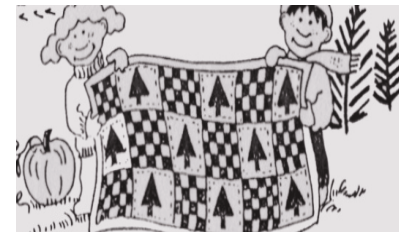
Shown above is a sampling of the many distinctive quilts available at the recent Luther Park Quilt Auction held at Mount Calvary Lutheran Church in Excelsior.

fantastic support for a Bible Camp experience for all. These special gifts really put us over the top!"

Mark your calendar now! The date for the 2014 Quilt Auction is Saturday, September 27, at Mount Calvary. Viewing and lunch will begin at noon and the auction at 1 p.m.

As always, we'll be looking for quality double-, queen-, and king-size quilts as well as unique wall hangings and baby quilts, etc.

contact Joel Legred at 612.987.6628 or email: jlegred@lutherpark.com.



Open House celebrates "Do Everything in Love"

Luther Park celebrated 54 years of outdoor ministry at the 2013 Summer Open House on July 20. Old friends and new came from near and far for the occasion to live this year's theme: **Do Everything in Love**

The festivities began with fellowship over coffee and rolls, followed by an inspiring outdoor worship led by staff and double-week campers. Special awards/recognitions, were presented including Outstanding Christian Service Awards to Roger & Kathleen King,



Executive Director Joel Legred serves communions to youngsters at the worship service during Open House.

Nativity, and Bob Kresse and members of Diamond Lake (articles and photos on page 7).

By then it was time for the always popular buffet lunch created by the Luther Park kitchen staff, followed by an ice-cream social. Everyone was invited to enjoy the beautiful day with a ride on the camp's new pontoon boat or to partake in camp tours, waterfront activities, shopping in the camp store and more. Of course, many chose to relax, rest and commune with God, nature and the spiritual beauty of the camp.

Additional special gifts donated in honor or memory of loved ones included a \$1,000 gift given in loving memory of Carl R. Johnson, House of Prayer by wife, Marilyn, and sons Randy and Brad, as well as \$2,000 from Carl's sister, Barbara Bergstrom. Both of these much appreciated gifts are dedicated to the Retreat Center.

What has become an annual highlight was the arrival of July bikers completing their journey from Minneapolis to camp during the festivities with the funds they raised for camperships (see photo and story to right). If you didn't make it this year, please plan now for next summer's Open House on July 19, 2014.

Combined Bikeathons raise over \$16,000 for camperships



July Bikeathon participants (l. to r.) are Myles Gutknecht, Elim; Tom Nelson, Elim; Linda Sandel, NE Community Lutheran; and Stafford Gutknecht, Elim. Not pictured are riders from Diamond Lake and Christ Memorial.

The photo above shows some of the July bikers. The June bikers were featured in the Summer issue of the Echoes newsletter.

The June and July Bikeathons together raised a grand total of over \$16,000 this year for Luther Park Camperships. This includes a \$1,000 match from the Northwest Minneapolis Chapter of Thrivent Financial for Lutherans and \$600.00 from the Northwest Hennepin County Chapter.

"We enjoyed good biking weather," said Tom Nelson. "The trip was a smooth one, and we safely delivered the scholarship money to Luther Park! But you just never know what you're going to see! We had enjoyed watching some youth practicing on the trapeze and high-wire just outside of Scandia. We had a nice visit, and I took some photos of them."

Many thanks to all who donated to these scholarship fund raisers, to Thrivent for their additional funding, and of course to these dedicated riders and their sponsors.

Please consider getting a group together from your church to participate in a Luther Park Bikeathon. It's a great opportunity to become involved in a faith-community-building activity and have some fun at the same time.

Next year's Bikeathons will be held June 7-8 and July 18-19. For more information on joining one of these adventures, call Executive Director Joel Legred at 612.987.6628, or email: jlegred@lutherpark.com.

2014 Summer Camp Schedule Set

SAVE \$50! Register by Dec. 31; SAVE \$25 by registering by March 1 . Register online now!

2014 SUMMER SCHEDULE

DATE	CABINS	TREE HOUSES	CANOE TRIPS	SENIOR HIGH LEADERSHIP
Staff Training June 8-21				
Wk. 1 June 22-25	Gr. 1-4/3-Night Camp			
Wk. 1 June 22-27	Gr. 3-6	Gr. 7-9 Night Owl Camp*	Group Registration Required	Gr. 10-12 Leadership Mentoring Gr. 9-12 Leadership Training
Wk. 2 June 29-July 2	Gr. 1-6/3-Night Camp			
Family Camp July 2-6 or 4-6	Family Camp	Family Camp		
Wk. 3 July 6-11	Gr. 7-9	Gr. 3-6	Group Registration Required	
Wk. 4 July 13-18	Gr. 7-12 Traditional Camp & Music Camp I**	Gr. 3-6	Group Registration Required	
Double Week July 6-18	Gr. 7-12			
All Staff Reunion July 18-20	All Ages, All Day!			
JULY 19 OPEN HOUSE — EVERYONE WELCOME!				
Wk. 5 July 20-25	Gr. 3-6 Traditional Camp & Music Camp II**	Reserved by a Group	Group Registration Required	
Wk. 6 July 27-30	Gr. 1-4/3-Night Camp			
Wk. 6 July 27-August 1	Gr. 3-6	Gr. 7-9 Night Owl Camp*	Group Registration Required	Gr. 9-12 Leadership Training
Wk. 7 August 1-4 & 4-7	Reserved for Sr. & Jr. High Leadership Camp (Group Registration required & different rates apply).			

* Denotes New Night Owl Program. This camp program is described on P. 2, right column, half-way down, under "Summer Camp 2014."
 **Denotes New Music Camp Offering. *Music Camp I* provides opportunities for Jr./Sr. High campers to share music with each other and with other campers during the week. Primary instruments will be strings (guitar, violin, mandolin, etc.). *Music Camp II* provides opportunities for Grades 3-6 campers to play primarily stringed instruments (guitar, violin, mandolin, etc.). More details will be coming.

CAMP FEE SCHEDULE

REGISTER ONLINE/PRINT OUT REGISTRATION FORM @ WWW.LUTHERPARK.COM

MEMBER/NON-MEMBER*

3-Night Camp	\$295/315
One Full Week.	\$430/450
Double Week.	\$700/760
Great Lakes Mission Trip	\$450/450
Sr. High Leadership Programs.	\$445/465
(Includes one free week)	
— Leadership Training	— TIM (Teens in Mission)
— Leadership Mentoring.	

SAVE \$50: REGISTER BY DEC. 31 OR
 SAVE \$25: REGISTER BY MARCH 1

NOTE: Camper fees shown are subsidized by gift allocations. The actual cost per camper, per week is about \$600.
 * Non-member churches are those that are not members of Luther Park Corporation.

Check with your church about camp scholarships

Fees Cover meals, lodging and all program materials, except in campground.

Fees do NOT include transportation. Round-trip from Twin Cities area: \$80; one-way: \$60. Pick-ups at House of Prayer (Richfield) & Elim (Robbinsdale).

Transportation available only for weeks of July 6-11, July 13-18, and July 27-August 1.

Campground \$18 per site/per night:
 \$20 with electricity

Family Camp July 2-6: 4 nights/11 meals (7 p.m. Wed. noon-Sun.) brunch. \$180 per person/Log House. Ages 5-12 are 1/2 above rate; under age 5, FREE.

Family Camp July 4-6: Includes 2 nights/5 meals (Friday noon-Sun.brunch. \$80 per person/Log House, Ages 5-12, 1/2 above rate; under age 5, FREE.

LUTHER PARK WISH LIST

Listed below are some of the camp's current needs. Perhaps you don't have any of them on hand, but would like to give a special gift or a gift in honor or memory of someone.

To contribute toward any of these items, please make a check out to Luther Park, note your wishes and mail to: Luther Park, 30376 Lakes Drive, Danbury WI 54830-9508.

* URGENT NEEDS *

RELIABLE PASSENGER CAR/VAN
 GOLF CART (TO TRANSPORT GUESTS)
 BAGLESS VACUMMS (NEW OR GENTLY USED)

SPECIAL NEEDS

Maintenance:

Four-Wheeler
 Rubber floor mats
 Wire-feed welder
 3'x5' commercial entrance mats-15

Kitchen:

Serving bowls/trays
 Cake Servers
 Big Frying Pans
 Ice Maker

Program:

Portable DVD Player with screen
 Crayola markers
 Seed beads & pony beads
 White boards & markers
 Craft supplies

Office:

Copy Paper (white and colors)
 Cork board
 Easel paper

THANKS FOR THESE GIFTS!

Log House curtains/material & labor
 Chrysler Concord auto-1999
 Home Theater system w/all the trimmings
 Boat battery, 2 lawn tractor batteries with bolts, trickle charger, & base station with external speaker.

Outstanding Christian Service Awards (Cont. from P. 7)

ROGER KING

I try to do things like that."

I've found that when I am doing things for others and I need some help, someone always shows up. Then I get inspired by the Holy Spirit."

I believe if God gives you a task to complete, God will get you through it. When it came to the roof on the Gazebo, I didn't feel comfortable doing it. So I called a guy I knew who did his own and he came right over and helped. When I was working alone at Luther Park, many times staff would come by and ask if they could help."

BOB KRESSE & DIAMOND LAKE VOLUNTEER GROUP

Since winter is closing in now, you might think this merry band of workers is done for the year. But you'd be wrong. Before you get this in the mail, they will already have been up to Luther Park to put a new roof on the Log House. Wow! Thanks again!

* * * * *

Camp is honored to have many outstanding Christian servants each year. If you are a volunteer, donor or staff member, you too, are one of Luther Park's outstanding Christian servants. All of you make it possible for the camp to serve children, families and other individuals as we strive to make a difference in the lives of all who spend time at Luther Park.

HOUSE OF PRAYER MISSION TRIP REVAMPS ROPES COURSE

A Cross-Generational Mission Trip to Luther Park has provided an impressive reconstruction of the aging Ropes Course.

Thanks to the generosity of House of Prayer members, the Minneapolis Chapter of Thrivent, House of Prayer's Youth Director at the time, Kristen Trandy, as well as the Mission Trip volunteers, the work is now completed.

"We are delighted with the great work accomplished by House of Prayer's Mission Trip participants," said Executive Director Joel Legred.



House of Prayer in Richfield Mission Trip participants spent a week at Luther Park reconstructing the Ropes Course.

An organization called ABEE Inc. determined the potential for the Ropes Course and identified 12 new or improved team-building activities the Mission Trip

volunteers helped construct during their time at Luther Park. ABEE is a full-service Ropes/Challenge Course provider of services in adventure education and programs.

The Ropes Course is designed to form community at Luther Park by bringing groups of campers closer as teams while working to overcome challenges together.

In working as a team on this Mission Trip, the House of Prayer volunteers set the stage for community building for the whole summer!

Special thanks to House of Prayer, Kristen Trandy and all of these inspiring Mission Trip participants!

Honorees presented 2013 Outstanding Christian Service Award at Summer Open House

By Sharon F. Miller, Writer/Editor

On July 20, at the Summer Open House, Luther Park presented the 2013 Outstanding Christian Service Award to Roger & Kathleen King, from Nativity, and Bob Kresse and members of Diamond Lake. Beginning in 1992, this award honors individuals or groups each year. The award is the highest volunteer and donor award Luther Park bestows.

The Outstanding Christian Service Award recognizes each recipient with a plaque, and their name is added to a plaque hanging in the Lodge which honors all recipients. Luther Park is truly blessed by the service, dedication and commitment of these volunteers and donors. They make it possible to accomplish many tasks that would otherwise not be possible.

ROGER AND KATHLEEN KING

Roger and Kathy joined Nativity about two years ago. He explained, "A few years ago, I was surprised to discover that Luther Park was right down the road—a few miles from our cabin. I knew there was a camp there, but never realized it was affiliated with our church, Nativity." King's newfound discovery turned out to be quite a blessing for Luther Park.

A faithful servant of the Lord, King truly enjoys doing things for others. He's now retired after working 25 years as a cabinet maker. Having his own workshop at home, it seems only natural that many of his projects involve woodworking and carpentry.

Last summer, King donated materials and built a beautiful 12' x 8' wood and screen Gazebo. It provides a great place for individuals and small groups to read, pray, meditate and more. You may have read about it in our last newsletter. After completing the project, King made a plaque and set it above the door with this Bible verse: "Trust in the Lord with all your heart. Do not depend on your own understanding. Seek His will in all you do and He will direct your paths." ~ Proverbs 3:5-6

But this isn't King's first gift to Luther Park. A year or so before that he graciously donated materials and labor for 11 gorgeous and sturdy Prayer Benches. These much needed resting



King, caught in action while constructing the Gazebo at Luther Park last spring.

places are now located in various places throughout the camp.

When asked about other endeavours, King noted he renovated his first home, helped rebuild homes damaged by Hurricane Sandy, makes Faith Chests for those who are baptized at Nativity, and more. And he acknowledges it's not all work and no play. He enjoys fishing, golf, wine-making, gardening, landscaping, and even the work that he's doing for others.

Along with all this, he also loves spending time with his wife, Kathy, and children—a daughter Adrienne and twin boys, Kiefer and Kellen—at their cabin and in other activities.

Kathy is still working outside the home, but is also very involved in her church and community. At Nativity, she coordinates Silent Retreats with a coworker, and is a member of other small groups. She also serves on the board of their town house association, and often joins her husband in his volunteer work at camp.

King shared that he enjoys listening to Evangelist Joyce Meyer, and especially likes some of her wisdom. He said, "She defines true sacrifice as: '...when you spend money on—or do something for—someone that you would really like to have yourself.'" (Cont. on P. 6)

BOB KRESSE/MEMBERS OF DIAMOND LAKE

Long-time member of Diamond Lake, Bob Kresse, has been a great supporter and worker around Luther Park for a number of years. And he's a great guy to have around if you want to get construction work done. His most recent project for Luther Park is the coordination of funding and labor to renovate Diamond Lake's adopted cabin, Pine. Kresse brought together a group of enthusiastic and skilled volunteers from Diamond Lake to help do the job. If you haven't yet seen the renovations, be sure to stop by next time you're at camp.

Those involved include Bob & Cyndi Kresse, John and Sue Nelson, Pastor Mark Orvik, Gene Zempke, John Brumsberg, Kirk Gallop, Bob Gustafson, Cris Clausen, Olaf Minge, Kurt Boston, Craig Ritzinger, Jim Teurman, Brad & Linda Poff, Graydon Royce, Robb Bass and Frank Anderson. Youth helpers were Conner Bass, Gabe McNee, Ransom Williams, Geoff Gallup, Ben Teurman, and Sigurd & Stellan Orvik.

Shortly after joining Diamond Lake, Kresse became a member of the Youth Committee. This very naturally and quickly led to his involvement with retreats at Luther Park." One thing led to another," said Kresse. "And it wasn't long before I was a board member (six years)."

The whole Kresse family has also been involved with the camp. His wife, Cyndi, and



Above, Kresse (right) receives Award from Legred on behalf of all Diamond Lake volunteers. Additional photo of many of the volunteers appears on page 5.

their two children, Andrew and Megan, now grown and away from home, have also spent lots of time at Luther Park. "They just loved it," said Kresse. "They always come home singing all the camp songs. He notes that Cyndi, a school psychologist, is also very active at Diamond Lake, serving on Church Council, the Youth Committee, teaching confirmation, and also comes up at times with his volunteer group. And both teach Sunday School.

Kresse explains that he always enjoys spending time and helping out at Luther Park. "It's our church away from church. The setting is beautiful, and our retreats are incredibly successful! The meals are always great, and they treat you like royalty. I've never worked so hard and still gained weight! Every time I'm there to work, I also have fun. The staff always make it fun. And they thank you profusely for everything. They're great!

Kresse expressed, "My thanks to the members of Diamond Lake who donated the entire amount for the remodeling, and again to the Luther Park staff for the additional support and wonderful meals. About 500 volunteer hours went into the remodel of Pine Cabin." What a wonderful gift to Luther Park! (Cont. on P. 6)

Announcing Staff Changes

FAREWELL AND MANY THANKS TO DAN BENNETT

The Luther Park Board and staff thank Dan for his service as Program Director and Retreat Host. Dan resigned for personal reasons. He will be greatly missed. Dan has been an enthusiastic and warm presence for retreat groups, campers and summer staff over the last two years. His gift of music has been a blessing to hundreds of people of every age. We know God has plans for him and new adventures await him.

TARA JO HILL, current staffer, is taking on new duties as Retreat Host/ Summer Program Director. We are excited to have Tara on staff in this capacity.

WELCOME BACK TO ARLENE MILLER who has returned to the kitchen as Food Service Coordinator. 🍳



YOUR LEGACY TODAY

Ideas for leaving a lasting legacy at Luther Park



Would you like to make a gift from your IRA?

Are you 70 1/2 years old or older?

Do you have an IRA?

If you answered "yes" to both of these questions, you may be eligible to provide up to \$100,000 in charitable gifts directly from your IRA. Under the law, gifts distributed directly to a charity from your IRA have been excluded from your taxable income, but may be used to satisfy part of your required annual minimum IRA distribution. This is still effective through 2013.

Consult your financial advisor for individual advice on this opportunity. individual advice on this opportunity.

Would you like to leave a legacy for future generations that reflects your faith and values?

Legacy gifts to Luther Park will be a seed planted in good soil, because it will help people of all ages deepen their faith in Jesus. You can provide a legacy gift through a life insurance policy or a will bequest. If you have already completed your will, a codicil can be added at a nominal charge.

For more information, please contact Executive Director Joel Legred at jlegred@lutherpark.com.

Luther Park Retreat Ministry

A review of future retreat events for campers, retreaters and friends of Luther Park

For more information contact Retreat Host Tara Jo Hill at 715.656.7244; e-mail: retreats@Lutherpark.com

Announcing 2013-14 Programmed Retreats

SLIDE INTO CAMP THIS WINTER!
Plan now for some winter excitement!

Luther Park is not just for summer activities. We're open year-round! Join us for some fun, fresh ideas to jazz up your cold weather blues. Retreats programmed by Luther Park staff begin promptly at 7 p.m. the first evening. Bring a friend, church group, or come alone. Just be sure not to miss out on a great weekend.

All type of groups are invited—youth, men, women, quilters, confirmands and families, to name a few—to head up to the North Woods for a relaxing/exciting weekend. Mid-week retreats are also welcome for a reduced rate, and retreat planning assistance is available.

Programmed Retreat Weekends

- ◆ Winter Scrapbooking and Stamping Weekend, Feb. 6-9
- ◆ or Feb. 7-9, 2013

Retreat Costs

- ◆ Thursday-Sunday option: \$125.00
- ◆ Friday-Sunday option: \$95.00

To Register, please complete the attached form and return it with your \$50 deposit to: Scrapbook & Stamping Weekends, Anna Treague, Luther Park Camp, 30376 Lakes Drive, Danbury, WI 54830.

Watch for more retreats that may be added this Winter and Spring. And remember, you can choose your own times and program your own retreats. Luther Park will be happy to assist you in whatever ways possible. Just ask!

Questions? Please call Retreat Host Tara Jo Hill at (715) 656-7244 or e-mail retreats@lutherpark.com to book a retreat or to see what opportunities Luther Park can provide for your next retreat. You can also check out our web site: www.lutherpark.com.

LUTHER PARK SCRAPBOOK & STAMPING CAMP WEEKEND REGISTRATION FORM

Retreater(s) Name(s) _____ Age _____ Gender _____
 Spouse (If applicable) _____ (optional for adults)
Registering for:
 Winter Scrapbooking & Stamping Camp, Feb. 6-9 or
 Winter Scrapbooking & Stamping Camp, Feb. 7-9
 Congregation _____ Names of preferred roommate(s) _____
 Address _____ City _____ State _____ Zip _____
 Home Phone _____ Work Phone _____ E-mail _____
 Emergency Contact _____ Emergency Phone _____
Weekend Fees: Thursday option is \$125 and Friday option is \$95 per person.
 Total price: _____ Please send a deposit of half the total amount when registering.
 Deposit amount: _____
Method of payment:
 Check/Money Order: Make payable to; Luther Park Camping & Retreat Center
 Visa ___/MC ___/Discover ___/AMEX ___ Acc't # _____
 Expiration Date _____ CSC#: _____ A 3 or 4 digit #on back of credit card.
 Signature _____
 THIS AUTHORIZATION MUST BE COMPLETED AND SIGNED BY PARTICIPANT.
 I understand that unless I provide separate written notice, photos taken of myself at camp may be used for camp-approved publications such as the Luther Park Echoes. Please list ALL allergies & dietary restrictions so we are better able to provide you with the best service possible.

 Signed _____ Participant _____ Date _____
 Please mail to: Anna Treague, Luther Park Camp, 30376 Lakes Drive, Danbury, WI 54830



VISIT OUR WEB SITE
CHECK OUT OUR GREAT NEW WEBSITE!
www.lutherpark.com
 New improvements—many photos



Like us on facebook
www.facebook.com/LutherParkBibleCamp

A Message From the Executive Director

Joel Legred



Live as Children of Light ~ Ephesian 5:8b

The Director of Family Ministries at my church teaches children about God-time—time set apart for God.

She lights a candle and says this is our God-time...our very special time to talk with God and listen to God.

She encourages families to set aside time to light a candle and have family God-time.

Bible camp is God-time. Families, kids and adults all come here for time with God. It's a holy (set apart) time with God and with each other.

We light candles and talk about where we've seen God's fingerprints in the world. We light campfires and sing songs about God's love and grace.

My wife, Brenda, and I will never forget the experience we had when Jennifer Swick, a former counselor, signed the

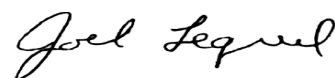
words to a song called, *Go Light the World*. We were so moved by the sign language set to music—sign language that spoke to the need for God's light in the world.

It's my hope that everyone who comes to Luther Park experiences the light of Christ and knows a little more deeply that they carry Christ's light to places of darkness.

It is my prayer that each of you reading this knows you are love, hope and light for those around you.

Go light the world!

Joel Legred



Executive Director

Quotable Quote

Franklin D. Roosevelt's advice regarding the "3Bs" of a good speech:

**"Be sincere.
Be brief.
Be seated."**