



www.lutherpark.com

ECHOES)))))))

CHANGE SERVICE REQUESTED

From The Point

Vol 24, No. 1

A Newsletter for Campers and Friends of Luther Park

Spring/Summer 2013

'Keeping Faith Alive!' ... Sign up now for Summer Camp and discover what this means

Yes, it's really true! Even though we may have missed a bit of spring, summer is now here. And it's time to sign up for Summer Camp and become part of the fun.

Come individually or bring a friend to enjoy all of the great adventures: singing, water activities, evenings around the campfire and more.

This summer our theme is based on 1st Corinthians 16:14: *Let all you do be done in love.*

You are invited to join us this summer as we learn more about keeping faith alive through scripture, worship, prayer, hospitality and service.

We hope you can join us for this new adventure. Your camping fee will include your week at camp along with all meals, lodging and program materials. Here's a brief description of some of the varied camp programs available.

Day Camp

Bible Camp comes to you. Luther Park brings fresh ideas and trained staff to your congregation. Churches must call camp to reserve dates.

Cabin Camp—partial week or week-long camp

Adventure that provides fun and growth in Christian faith for all grades.

Treehouse Village

Rustic, hands-on, God and nature-based week-long camp.

Double Week Camp

Available for grades 7-12. This traditional camp experience gives



Campers enjoy waterfront fun at Luther Park.

campers two whole weeks at Luther Park.

Canoe Trips

Experience the beauty of the Namekagon and St. Croix rivers. Great for beginners and experienced campers alike. (cont. on p. 2)

SPECIAL ANNUAL REPORT INSERT

See pages 3-6

COMING JULY 20

SUMMER OPEN HOUSE

SCHEDULE OF EVENTS

- 9-11 a.m. Arrive at your leisure to enjoy coffee/cold drinks and sweet rolls.
- 11 a.m. Outdoor worship
- 12:15 p.m. Outstanding Christian Service Awards, Volunteer & other recognitions, New board member welcome
- 12:30 p.m. Special Buffet Lunch at the Lodge.
- 2 p.m. Old-fashioned Ice-Cream social, pontoon boat rides, camp tours, waterfront open with lifeguard, and more.
- 3 p.m. LP Board Meeting
- 4 p.m. Farewells

HIGHLIGHTS OF THE DAY

You'll be glad you came when you see Luther Park's great buffet lunch.

You'll also enjoy an inspiring outdoor worship service, the ice-cream social, presentation of the Outstanding Christian Service Awards going to: Bob Kresse & Diamond Lake Lutheran—Kresse's group for funding and labor to renovate Pine cabin; and Roger King, of Nativity in St. Anthony, for the Gazebo and Prayer Benches.

Also recognized will be Lorraine Olson, Zion in Mpls., who recently passed away leaving nearly \$56,000 for the Retreat Center and cabin renovations. Because of Lorraine's gift, an additional \$5,564.25 was received through a Thrivent program, CharitAbility for Life. (See article on p. 6).

Dedicated staff and volunteers, the backbone of (cont. on p. 7)

Exciting new happenings at Luther Park

Estate gift received from Lorraine Olson, long-time member of Zion Lutheran Church

By Sharon F. Miller
Writer/Editor

When Lorraine Olson's nearly \$56,000 estate gift to Luther Park was announced by Luther Park Board Secretary/Zion Lutheran Parish Administrator Deana Miller at the annual meeting in March, you could have heard a pin drop. It was one of those unexpected and surprising WOW moments! After remembering Zion, others and family, Lorraine named Luther Park to benefit from her estate.

Acts 20:35

"...For I remembered the words of the Lord Jesus, 'It's more blessed to give than to receive.'"

In addition to the estate gift itself, Luther Park has received an additional \$5,564.25 from Thrivent Financial for Lutherans through a program called CharitAbility for Life (see article on page 6).

To those who knew Lorraine well, her gift wasn't too surprising. Known to be a lifelong, compassionate caretaker of family members and others, including her mother and sister-in-law, Lorraine also had a very special interest in children and camping ministry. And Zion is a charter member of the Luther Park Corporation.

Born in 1918, confirmed at Zion in 1933 and graduated from Central High School in 1937, Lorraine worked for 38 years in the finance department at Honeywell before retiring. She was known to be extremely organized and detail oriented. Lorraine was also very active at Zion and was recording secretary for many years. One of her favorite volunteer jobs was working with the annual lutefisk dinner. She was also active with the funeral committee, taught Sunday school, belonged to the quilting group, altar (cont. on p. 2)

Roger King, member of Nativity Lutheran Church, donates & builds beautiful Gazebo for Luther Park

By Sharon F. Miller
Writer/Editor

Roger King is really a KING at Luther Park. And for good reason! Roger spent many hours preparing for and building an enchanting wooden and screen Gazebo. He also provided all of the materials and labor for the structure.

The 12' x 8' Gazebo, located between the Log House and the Lodge, provides screened in space for people to read, pray, meditate and more. It's a great place for cabin groups to have a Bible study as well as a special gathering place. It's sure to get plenty of use.

This isn't Roger's first gift to Luther Park. Last year he generously provided the labor and materials to build several Prayer Benches now located throughout the camp.



The brand new Gazebo at Luther Park with its donor and builder. A plaque above the door says: "Trust in the Lord with all your heart. Do not depend on your own understanding. Seek His will in all you do and He will direct your paths."

We are extremely grateful to Roger for this wonderful gift, and look forward to recognizing him and his gift at the Open House on July 20. At that time Roger will also be receiving one of Luther Park's Outstanding Christian Service Awards for 2013.

Summer Camp (cont. from p. 1)

Leadership Training(LT)

Learn Leadership skills through hands-on training in the camp setting.

Leadership Mentoring (LM)

Take the next step in leadership development.

Teens in Mission (TIM) Team

Youth-group leadership training to take home to support the mission of your church. **Group registration only.**

Great Lakes Mission Trip

Camp-based mission service experience in the Twin Ports of Duluth-Superior and Burnett County, Wis. **Group registration only.**

For a more detailed description of these camping opportunities, please visit our website at www.lutherpark.com.

To reserve a place at camp, you can either register online at www.lutherpark.com, complete the registration and health form on the back page of this newsletter, or use the brochure available at your church.

But register soon! Some weeks and programs are filling up. Return the form right away with your \$200 deposit—or the entire fee if you prefer. Final payment is due two weeks before you arrive at camp.

At Luther Park, you'll find friendly staff, great food, music, fellowship, quiet moments in the outdoor chapel, the beautiful northwoods, stars for gazing, and much, much more—all waiting for you.

Detailed information about dates available and fees are shown on the back of the summer brochure and on our website: www.lutherpark.com.

"Whether you have been to Luther Park previously or have never visited, you are encouraged to join us this summer, along with staff from all over the world," said Executive Director Joel Legred. "We'll discover what FaithAlive! means in our lives,"

If you have any questions, please call camp at 715.656.7244 or e-mail: camp@lutherpark.com, or check the website at www.lutherpark.com.



Boys just wanna have fun... at Luther Park.

DO YOU HAVE A CAR YOU CAN DONATE?

All of Luther Park's cars are given by generous donors and are essential to the ministry. During the summer, all vehicles are in use for day camps, canoe trips, and other transportation needs. Donating a vehicle is pretty easy to do, and gives the person who donates it a significant tax savings. If you are interested in learning more about how to donate your car or van, please contact Joel Legred at 612.987.6628, or e-mail: jlegred@lutherpark.com.

Luther Park ECHOES From the Point

is published by Luther Park Corporation, a non-profit organization affiliated with congregations of the Evangelical Lutheran Church in American (ELCA), and other Lutheran congregations, to share the news and ministry of Luther Park Camping and Retreat Center with campers and friends of Luther Park. The camp is located at 30376 Lakes Drive, Danbury, WI 54830.

Editor/Writer/Designer/Photographer: Sharon F. Miller

Pictures, information and opinions are welcomed and encouraged. Call or send to: Luther Park, 30376 Lakes Drive, Danbury, WI, 84830.

YEAR AROUND STAFF MEMBERS

- Summer Prog. Dir./Retreat Host: **Dan Bennett**
- Summer Cook: **Pete (P.J.) Warren**
- Executive Director: **Joel Legred**
- Volunteers: **Eric Zaraca**
- Office/Registrar: **Anna Treage**
- Extraordinaire: **Marlene Zaraca**

Lorraine Olson

(cont. from p. 1)

guild and more.

Later in life, Lorraine moved to the Augustana Apartments. Always wanting to be busy and helpful, she was active in the Thrift Center there, served as hostess at the salad bar lunches and checked on fellow 4th floor tenants every morning and evening.

Luther Park has directed \$50,000 of Lorraine's gift toward building the Retreat Center. The remaining funds will go for cabin renovations. To date, we have over \$500,000 in gifts and pledges toward our goal of \$850,000 for the Retreat Center.

Many thanks to Lorraine for all she's done and her great generosity. She will be dearly missed by many.



Check out our new Facebook page:

<https://www.facebook.com/LutherParkBibleCamp>

WELCOME 2013 SUMMER STAFF

Luther Park is once again blessed with an excellent and talented group of young Christian men and women who will lead and mentor our campers this summer. We Welcome each one as they become part of our outdoor ministry this summer. (See photo on pages 4-5).

- Nelia Bauman, Hinckley MN
- Jaime Bennett, Maple Grove, MN
- Daniel Bennett, Danbury, WI
- Thomas Buan, Chanhassen, MN
- Johanna van Eijzeren, Goes, Netherlands
- Kate Gantz, Eagan, MN
- Jessica Goodsell, Mounds View, MN
- Mallory Grams, Hopkins, MN
- William Henney, Shorewood, MN
- Tara Jo Hill, Oak Grove, MN
- Phillip Johnson, Appleton, WI
- Carl Kent, Coon Rapids, MN
- Joe Larrivy, Aurora, CO
- Elliott Leybourne, Newcastle, United Kingdom
- Alejandro Restrepo Garcia, Bogota, Columbia
- Georgia Riding, Auckland, New Zealand
- Ellora Schaaf, Danbury, WI
- Zsafia Szloboda, Gyor, Hungary
- Scott Thomas, Richfield, MN
- Anilla Till, Esztergom, Hungary
- Jason Tollers, Minneapolis, MN
- Lucia Tomkova, Presov, Slovakia
- Sandra Velthuis, Selligen, Netherlands
- Abigail Wacholz, Eden Prairie, MN
- Peter (PJ) Warren, Ashland, WI
- Adam Witte, Hermantown, MN

BIKEATHONS: One done, one to go!

What is the Bike-a-Thon?

To help raise funds for the camp, bicyclists seek donations, then ride from the Twin Cities to Luther Park to hand deliver the proceeds.

Why are these dedicated bicyclists willing to ride 120+ miles?

The inspirational faith journey that a church camp experience provides gives new direction in a young person's life! Luther Park needs continue to grow, and with your support the life changing outdoor ministry can continue.

Two Scheduled Ride Dates;

Bike-a-Thon I – June 1-2

Bike-a-Thon II – July 19-20



www.lutherpark.com



LUTHER PARK

BIKE-A-THON

How Can I Help?

Think About Riding

You will need a good, recently tuned, bicycle with no known mechanical problems and the ability to ride approximately 75 miles the first day, plus 45 miles the second day. Plus, meet some new friends!

Consider Financial Support

Support the bicyclists by giving a donation to be delivered by pedal power to Luther Park. Your donation is also tax deductible.

Like more information?

Contact Joel Legred, Tel: 612-987-6628 or Email: jlegred@lutherpark.com

Supplement funds provided by Thrivent Financial for Lutherans.

I/We support the mission of the bicyclists on their quest to deliver, via pedal power, camp funds raised for Luther Park.

I would like to support the following exciting ride!

- Bike-a-Thon I – June 1-2
- Bike-a-Thon II – July 19-20

Please make checks payable to: Luther Park Bike-a-Thon
Luther Park Bike-a-Thon
30376 Lakes Drive, Danbury, WI 54830

Name _____

Address _____

City _____ State _____ Zipcode _____

Phone Number _____

Email _____

AMOUNT _____

Thank you for your donation and prayers.

BIKEATHON I was successfully completed on June 2. Many thanks to all the participants and sponsors. To date, nearly \$14,000 has been raised with funds still coming in. Participants are pictured on pages 4 & 5. Watch for more information in future articles.

Luther Park Annual Report Highlights for 2012

A Message From the Executive Director

Joel Legred



A Message From the President

Janet Nelson



God's blessings cover Luther Park and all who are involved here

The snow fall here reminds us of God's blessings covering Luther Park.

Thank you, God, for your provision for the ministry here. Thank you to everyone who has covered this place with prayers, gifts, and volunteer labor. We don't know what we'd do without you.

I'm so thankful for our staff. Dan Bennett, our retreat host and Summer Program Director, is such a positive spirit and has a musical giftedness that continues to amaze retreaters and campers. Carl Kent, former counselor of four years and now our year-round cook, loves to cook and tends to friendships with his gentle kindness. Anna Treague, our registrar and office person, continues to master everything there is to know about camp including helping us once again achieve our ACA (American Camping Association) accreditation this past year. Sharon Miller, our newsletter editor, continues to produce quality pieces that keep people in touch with what's happening at camp.

We also are graced by three volunteers—Marlene and Eric Zaraza who have been blessings in the kitchen, in construction and maintenance, and Patty Schaaf who continues to gift us with her time even after retirement. People just grow to love this place.

Generous friends and churches provided what we needed for our annual budget. We are grateful to be operating within our means. We made some tough decisions a couple of years ago that have served us well, even though it has been a challenge to get by with less. Special gifts from individuals include a new pontoon boat and a van in good condition.

The construction of a family and retreat center is closer to becoming a reality. We have \$500,000 committed now and can begin construction at \$750,000. Luther Park will be able to serve many more people with this additional facility. With more people visiting the camp, more adults will see what needs to be done around the camp and take more ownership in maintaining our facilities. More importantly, more people of every age will experience God's love and the joy of knowing Jesus.

We have a great staff coming together for this summer. Many of them played broomball on the lake on New Year's. It's fun to see how God brings people together from across the miles.

You are invited to come and visit too! Camp is open year-round and is very affordable. We would love to host your family or church group.

In Christ's service,

Joel Legred, Executive Director

Learning together to keep faith alive...

"Faith Alive!" This is the theme for summer camp at Luther Park.

Campers and staff will learn ways to keep their faith alive through scripture, worship, prayer, hospitality and service.

Luther Park is an awesome place for people of all ages to renew their faith among God's creations in the outdoors!

We are getting closer to realizing the dream of the Retreat Center, which will make Luther Park much more accessible to families and older adults. The progress continues in upgrading camp facilities, and we deeply appreciate the recourses and sweat equity that has been given in the cabin renovations and other projects.

Some of the new additions to Luther Park are prayer benches in different areas for campers to sit and enjoy nature and feel closer to God. A gazebo is under construction and will be ready for summer. This will be a great place for campers to gather for activities.

Thank you to outgoing board members Kris Pearson (Diamond Lake Lutheran) and Randy Johnson (House of Prayer) for their service to Luther Park.

And welcome back to David Shirley (Messiah) who has served in various positions on the board in the past.

Welcome also to new board members Gene Zemske (Diamond Lake Lutheran) and Maren Wacholz (Shepherd of the Hills). Your dedication to Luther Park is greatly appreciated!

In closing, many thanks to all the board members and other volunteers who have given of their time and money to Luther Park. You are helping youth keep their "Faith Alive!"

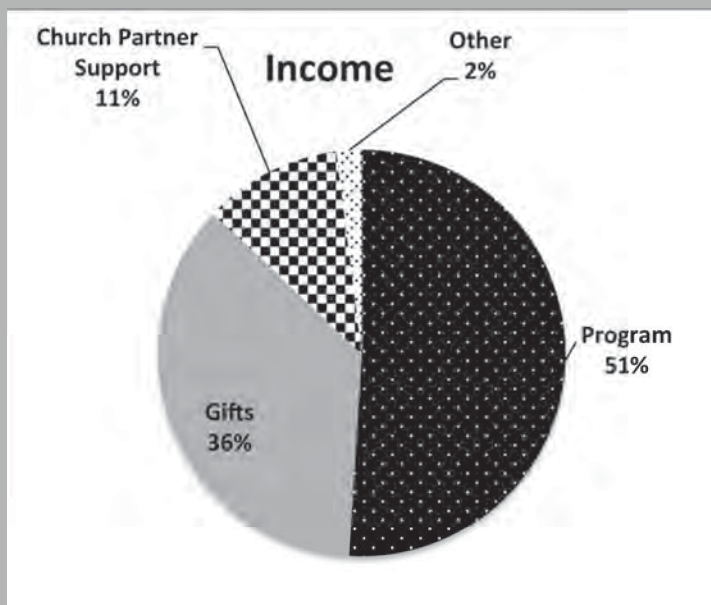
God Bless,

Janet Nelson, President
Luther Park Board



2012 Luther Park Income and Expenses

Where \$ Comes From:



Where \$ Goes:





Thrivent Financial for Lutherans gifts for 2012 are shown on page 6

2012 Church Partner Support

These gifts are provided each year by member congregations as an expression of their ministry partnership with Luther Park.

Bethany/36th Avenue
Minneapolis, Minn.
\$800
Calvary
Minneapolis, Minn.
\$1,000



Diamond Lake
Minneapolis, Minn.
\$6,000

Elim
Robinsdale, Minn.
\$1,200
Family of Christ
Minneapolis, Minn.
\$200
Gustavus Adolphus
Minneapolis, Minn.
\$1,935.38
Hope (Brule)
\$200
House of Prayer
Richfield, Minn.
\$1,000
Lakeside
Webster, Wisconsin
\$600



Lord of Life
Maple Grove, Minn.
\$10,000
Lutheran Church of the Reformation
St. Louis Park, Minn.
\$400
Mount Calvary
Excelsior, Minn.
\$2,500
Nativity
St. Anthony, Minn.
\$2,000
Peace
Plymouth, Minn.
\$250

Richfield
Minneapolis, Minn.
\$300
St. Barnabas
Plymouth, Minn.
\$1,500
St. James
Crystal, Minn.
\$1,000
Salem
Minneapolis, Minn.
\$1,000
Yellow Lake
Danbury, Wis.
\$300
Zion
Hinckley, Minn.
\$300

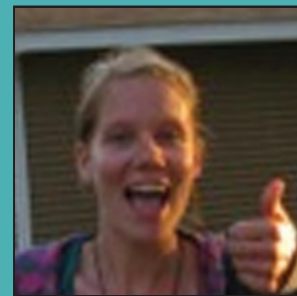
Zion
Minneapolis, Minn.
\$600
Other Congregational Giving
In addition to Church Partner Support, Luther Park receives other generous gifts from churches/church affiliated groups.
Calvary
Minneapolis, Minn.
\$195/Mission of the Month

Christ Memorial
Plymouth, Minn.
\$744.50/Bikeathon
Diamond Lake
Minneapolis, Minn.
\$2,459.20
Pine Cabin Renovation
Elim
Robinsdale, Minn.
\$1,000
Elim Foundation
Gustavus Adolphus
\$525
Special Gift
House of Prayer
Richfield, Minn.
\$332
Foundation
\$25
Card Ministry
Lakeside
Danbury, Wis.
\$1,000/Trash & Treasure
\$500/Christmas
Messiah
Minneapolis, Minn.
\$250
CFCL Center Cafe
Mount Calvary
Excelsior, Minn.
\$3,000/Foundation
\$285.47/Sunday School
\$411/Bikeathon
Nativity
St. Anthony, Minn.
\$467.68/
Blessings Weekend
St. Barnabas
Plymouth, Minn.
\$790/Gift of Love
Yellow Lake
Danbury, Wis.
\$100/WELCA

THE LUTHER PARK SMILE

It's Priceless...

but your gifts make it happen!



The June Bikeathon was another successful fundraiser for Luther Park.

Pictured below are participants from Bikeathon I. To date, they have raised over \$14,000, including an \$800 Thrivent match from NW Henn. Chapter. The bikers represented five corporate Luther Park churches who traveled 120 miles over two days, raising scholarship funds to help send youth to camp. All of this was accomplished despite a steady downpour for 45 minutes. However, spirits remained high with bikers already talking about next year. Thanks to all who were involved!



Bikeathon participants from left to right: Rod Nerdahl (Messiah), Donny Bergquist (Family of Christ), Scott Wright (House of Prayer), Chris Anderson (Mount Calvary), Gerald Gallati (Nativity), Tom Gustafson (Messiah), Frank Newman, Stacie Settergren (Messiah), Matt Settergren (Messiah), David Shirley (Messiah), Michelle Xiong (Messiah), Matt Xiong (Messiah), Linda Sandell. Not pictured sag drivers: Pat Shirley (Messiah), Peggy Nerdahl (Messiah).

Introducing the 2013 Summer Staff (names and hometowns listed on p. 2)



Luther Park
A Place for all ages... A Place for all seasons...
Mission Statement

Luther Park is a cooperative ministry of ELCA congregations serving people of all ages through a variety of programs in an out door setting. Our Mission is to provide an environment in which the Christian faith may be strengthened and people may grow in their personal relationship with God.

2012 Memorial/Honorary Gifts (1-1-12 to 12-31-12)

To receive a memorial/honorary gift packet for future use, please call camp at 715.656.7244.

In Honor of...

Herman & Delores Asproth
Jon Bowers
Destiny Colville
Paul & Barb Johnson
Joel Legred
Burt & Sharon Miller's 50th Wedding Anniversary

Tom & Janet Nelson
Grandsons Noah & Samuel
Pastor Oberg, Gustavus Adolphus LC
Ray & Jenny Peterson

In Memory of...

Bert Anderson
John Anderson
Paul & Ruth Bennett

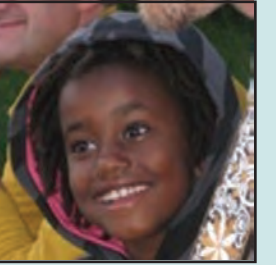
Donald Carlson
Fran Dunning
Deloris Friberg
Paul Gustafson
John Hanson
Cora Hedtke
Larry Hjelle
Ardell Hofstedt
Betty Jensen
Edward C. Johnson
Grandaughter Paula
Lillian, Lorena
Loved Ones
Mother, Violet Melin
John V. Nelson
Ralph L. Odden
Pastor Rudy Palo
Anne Stambaugh Parr
Cy Peterson
John W. Schneider Jr.
Michelle Sisson
Faye Stoewer
Bob Slater
Robert Slater
Burdell Stoneburg
Walter T. Tamlyn
Vern Tolzmann
Lenore Elaine Winn

Given by...

Michael & Cyndy Hurley
Robert & Linda Bowers
Gaye Guyton
Terry & Nancy Couillard
Marti & Jana Malatby
Marge & Larry Decklever, Sue & Tom Ebner
Audre & Lenny Gaer, Nancy & Ralph Gotto, Maritta & Ron John, Cec MacDonald, Rita Nienow, Donald Notvik, Judith Pascoe, Mary Rubbelke, Pat & Patrick Schweitz, Pat & Jack Schweitz, Nancy & Jim Smith, Becky Swanson, Marcia & Jerry Yanz
Terry & Nancy Couillard
Tom & Janet Nelson
Jonathon & Cynthia Stoewer
Larry & Gail Peterson

Given by...

Doris Anderson
Debra Anderson
Timothy & Kristine Bennett, Cynthia Deveau
Donald & Joyce Ross, Jr.
Bruce & Barbara Johnson
Burt & Sharon Miller
Willis Friberg
Robert & Kathy Gustafson
Jim & Jan Froberg
Phillip & Connie Buck
Carlton & Dorothy McCarty
Dale & Barbara Nelson
Richard Jensen
Marion J. Johnson
Applen Kranz
Gregory Miller & Debra Hutchinson
Dorothy McCarty
Lina Oberg
Michael & Susan Beal
Karen Nelson
Ray & Jan Bier
Hildegard Palo
Dorothy James
Norma Peterson
Rachel Schneider
Gary Sisson
Evelyn Ramin
Joan Slater
Betty B. Slater
Debra Anderson
Tim Tamlyn
Gerald & Sandra Doran
Carlton & Dorothy Declercq



Uffda Royalty Court Crowned at 16th Annual Ole & Lena Event



Pictured above with their prizes are the 2013 UFFDA Royalty Court members: From left, Prince Charles, Court Jesters Phil and Kitty, King Timothy and Queen Marylou. Congratulations and thanks to all for getting into the spirit of the event and for being such good sports (see article on p. 7).

Board members who attended the most recent Annual Meeting are shown below. From left are: Chuck Hughes (Richfield, Mpls.), Gerald Gallati (Nativity, Saint Anthony Village), Darrell Hyde (House of Prayer, Richfield), Deana Miller (Zion, Mpls.), Susan Mattson (N.E. Community Lutheran, Mpls.), Janet Nelson (Elim, Robbinsdale), Jennifer Parker (Gustavus Adolphus, Mpls.), David Shirley (Messiah, Mpls.), Gene Zemske (Diamond Lake, Mpls.).



Gifts in 2012 from Thivent Financial for Lutherans total \$14,809!

Gifts from Thivent Financial for Lutherans in 2012 totaled \$14,809 through corporate and chapter fraternal programs as well as the new Thivent "Choice Dollars" program (see article below). Many thanks to Thivent!

Thivent Financial for Lutherans provides financial expertise, personal customer service and a broad range of financial products and services. It is a faith-based membership organization dedicated to helping members live better lives and give back to their communities. The \$14,809 Luther Park received



includes the following contributions:
Thivent Community-Crossroads
 \$1,000 for Quilt Auction
Thivent Choice Dollars
 \$10,459—Eligible Thivent members direct charitable dollars to camps and other non-profits enrolled in the program.
Central Mpls. Thivent Chapter
 \$1,000—Match for the Ole & Lena Dinner Show/Silent Auction

Northwest Hennepin Chapter
 \$800—Match for June Bikeathon.

Northwest Mpls. Chapter
 \$1,000—Match for July Bikeathon.

West Hennepin Cty. Chapter
 \$750—Match for Quilt Auction.

"We greatly appreciate the great support Thivent Financial gives Luther Park year after year," said Executive Director Joel Legred. "Their generous gifts make it possible for the camp to continue serving so many adults, youth and children each year."



YOUR LEGACY TODAY

For leaving a lasting legacy at Luther Park

THRIVENT'S CHARITABILITY FOR LIFE PROGRAM. A GREAT WAY TO ENHANCE YOUR LIFE INSURANCE LEGACY TO LUTHER PARK

CharitAbility for Life is a benefit that enables Thivent contract owners to increase their charitable gifts to Lutheran charitable organizations. It is available for no additional premium whenever a contract owner has designated a Lutheran charitable organization as a beneficiary for at least \$1,000 of death benefit on his or her contract.

Upon the death of the insured, the Lutheran charitable organization will receive the death benefit proceeds as designated, and Thivent will contribute an additional 10 percent of that amount to the charitable organization, up to \$25,000 per insured.

Luther Park recently received an additional \$5,524.25 from Thivent due to an estate gift of nearly \$56,000 from Lorraine Olson of Zion Lutheran. Thanks Lorraine and Thivent!

For additional information, please contact Thivent at 1.800.847.4836 or Executive Director Joel Legred at 612.987.6628 or e-mail jlegred@lutherpark.com.

*Other seed fell into good soil and brought forth grain.
 ~ Mark 4:8*

Thivent Choice: A great way to support Luther Park

If you own of a Thivent insurance product, you may be eligible for this program. You can direct Thivent "Choice Dollars" to Luther Park and other non-profits. Many thanks for all Thivent Financial for Lutheran members who have already designated some or all of your Thivent "Choice Dollars" to Luther Park Camping and Retreat Center. In 2012, fifty-four eligible Thivent members directed a total of \$10,459 "Choice Dollars" to Luther Park. Many thanks to Thivent Financial for Lutherans and to all of you who directed dollars to Luther Park!

If you are interested in directing your Thivent "Choice Dollars" to Luther Park, or have already done so, you should know that you will need to set your organization every year from now on. The "set it and forget it" method of directing "Choice Dollars," is no longer an option. Members have two options for directing their Thivent "Choice Dollars."

- 1) Visit www.thivent.com/thriventchoice and select "Get Started" or
- 2) Talk to a Thivent representative by calling 1.800.847.4836 and saying "Thivent Choice." Have your Thivent contract number or Thivent ID ready.

Thank you for supporting Luther Park in this way. If you'd like additional information, please contact Executive Director Joel Legred at 612.987.6628 or e-mail jlegred@lutherpark.com.



Annual Meeting Report

The Luther Park Corporation held its 2012 Annual Meeting Sunday, March 17, 2013 at Richfield Lutheran Church.

Board President Janet Nelson called the meeting to order, welcomed everyone and asked that they share their name and church.

The opening prayer and devotions were given by Richfield's Minister of Faith Development Mary Beth Weibel who welcomed all and thanked Chuck and Betty Hughes for providing lunch for the group.

Secretary Deana Miller presented the minutes of the 2012 annual meeting. They were approved as read.

Executive Director Joel Legred welcomed and thanked everyone for his or her support of Luther Park and presented a Luther Park DVD of last summer's camp.

FINANCIAL REPORT/PROPOSED ANNUAL BUDGET

Due to having no treasurer at the time, Legred presented the 2012 financials, briefly reviewing specific line items on the reports. He noted the Finance Committee and board regularly review the financial reports. The reports were accepted as presented.

Legred then presented the 2013 proposed budget, which had been reviewed by the board. It is a conservative budget, based on the 2012 actual figures. In reference to the Human Resources line item he noted the use of year-round volunteers who assist with maintenance and cooking (a licensed cook). Consequently, the Human Resources line item is reduced. Following a brief discussion, the 2013 budget was approved.

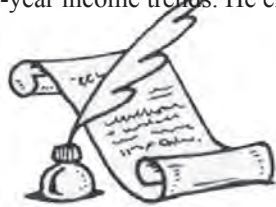
ELECTION OF DIRECTORS

Vice President Gerald Gallati presented the slate of candidates. Two new board members are being proposed for election:

Gene Zemske, Diamond Lake and David Shirley, Messiah; three are proposed for re-election: Gerald Gallati, Deana Miller and Susan Mattson. The slate of candidates was approved. President Nelson recognized the dedicated service of retiring board members Kris Pearson and Randy Johnson.

EXECUTIVE DIRECTORS REPORT

Legred noted highlights from his written report referring to graphs, charts, camper and retreat numbers, church giving and five-year income trends. He empha-



sized, "Last year was exciting!" and spoke about a number of highlights/reflections including new Face Book page, special quotes, gifts received, renovation of some cabins, and other volunteer work planned for this summer by volunteer church groups. He explained that camper numbers are up and urged churches to lift up Luther Park in their churches and consider offering scholarships.

MASTER PLAN UPDATE

President Nelson talked about the Master Plan and explained there is good progress toward the Retreat Center. Nearly \$500,000 is committed from churches and individuals. We need \$750,000 to break ground and \$850,000 to complete the project. Joel will update informational packets on the Retreat Center and make them available.

OLD BUSINESS: None

NEW BUSINESS:

There was a reminder of Work Weekend April 12-14.

Mary Beth Weibel also reminded the group of the upcoming 17th Annual Ole &

Lena Event on April 20 at Richfield Lutheran and noted that the popular comedy and singing duo Tina and Lena will be our entertainment this year. All proceeds go to Luther Park scholarships. She also acknowledged Burt and Sharon Miller as Ole and Lena Emeritus, since they have retired after 16 years of leading the event.

There are two Bikeathons this year, one in June and one in July. David Shirley issued a \$2,000 challenge to the group and is also looking for more riders and donations.

Deana Miller, Zion, reported that a member of Zion passed away having a life insurance policy with Thivent that named Luther Park as one of the beneficiaries. Luther Park will receive 30% of the policy, as will Zion, the insured's church for over 90 years. The amount should be substantial.

CLOSING

President Nelson led the group in reading the Mission Statement together followed by a motion for adjournment.

Respectfully submitted,
 Deana Miller, Secretary



2012 CAMPER NUMBERS

We praise God that Luther Park's ministry has had the opportunity to serve many.

Summer Campers	976
Retreaters	1,091
2012 Total	2,067

Board Officers Elected at May Board Meeting

President	Janet Nelson
Vice Pres.	David Shirley
Secretary	Deana Miller
Treasurer	Gerald Gallati



Thanks to Outgoing Board Members

Randy Johnson,
 House of Prayer

Kris Pearson,
 Diamond Lake

for their dedicated service!

Popular duo Tina and Lena wowed the crowd at Ole & Lena event

Yah sure! Yew Betcha!

It was time to dress up, get down, and have some good old-fashioned fun, don'tcha know, at the 17th Annual Ole & Lena Dinner, Silent Auction and UFFDA Good Time Show. And that's just what the sellout crowd did.

Of course, they did have a bit of assistance from the non-stop antics—music, singing, yokes and more—courtesy of those well-known and crazy entertainers, Tina and Lena.



Shown at the event on left and far right are entertainers Lena and Tina. In the center are Lena Emeritus (Sharon Miller) and Ole Emeritus (Burt Miller).

Nearly 200 Oles and Lenas whooped it up again for the single reason of raising funds for camp scholarships. And while they were at it, they sure nuff crowned a new UFFDA King and Queen, Tim Huttner and Marylou Maertens, old hands at this kind of stuff, along with Prince Sven (Charlie) Hughes and Court Yesters, Kitty and Phil (see photo on page 4).

Over \$7,000 was raised including supplemental funds of \$1,000 from Thrivent via the Central Minneapolis Chapter. Many thanks to Thrivent, Richfield Lutheran, the many volunteers, and all of you who support camp through this unique FUNdraiser. Tack sa myket!

St. Barnabas, Plymouth, hosts Point & Cross Banquet of Blessings



Pictured above is camper Eliza Wilson, 2nd from left, who spoke about her camp experience at the dinner. Also shown are (from left) her mother Abby Ellis, Neil Ellis, and Executive Director Joel Legred. Abby Ellis also spoke about being a camper at Luther Park as a child.

The 2013 Banquet of Blessings brought together a group spirit as warm and generous as ever. Since it's beginning, this annual dinner traditionally recognizes the impact of individual donors on Luther Park's ministry and thanks all who provide financial leadership for this special ministry.

Donors who give \$100 or more to Luther Park's Annual Fund are automatically enrolled in the Point and Cross Club. These gifts help to keep the camp's programs strong and allow Luther Park to offer financial assistance to any family requesting help. In addition to subsidizing camp fees, the Annual Fund also maintains programs and equipment.

The banquet provides donors with the opportunity to visit with others who share their commitment to Luther Park, hear

testimonials of how their gifts are changing peoples lives, and hear about the latest happenings at Luther Park from Executive Director Joel Legred.

Highlights of the evening included: a lively camp video produced by office employee Anna Treague; an inspiring camp experience presentation by summer camper Eliza Wilson; several people who shared their Luther Park camp story; and background music provided by Retreat Host Dan Bennett on his guitar.

Many thanks to St. Barnabas Lutheran, Plymouth, for hosting and catering the event. For more information on the club contact Joel Legred at 612.987.6628, or e-mail: Jlegred@lutherpark.com.

Quilt Auction at Mount Calvary October 5

On mark, get ready, get set...QUILT! Even if you don't quilt, put Saturday, October 5 on your calendar right now so you can join us for the 23rd Annual Luther Park Quilt Auction to be held at Mount Calvary Lutheran Church in Excelsior.

Lunch and viewing begin at noon, bidding at 1 p.m. If you quilt, knit or crochet, please consider making an item for the auction. Or just come and enjoy the day. Quilts, afghans and crafts at the event come in a variety of colors, sizes, patterns and prices. Quilt auction attendees have discovered this is a great place to find that special gift for a loved one. To donate, please contact Joel Legred at 612.987.6628 or e-mail JLegred@lutherpark.com

COMING EVENTS



June 16 Summer Camp starts

JUNE 28-30 &/or Family Camp
JUNE 30-JULY 5

JULY 19-20 Bikeathon II

JULY 20 Open House

JULY 26-28 Grandparent/
Grandchild Camp

OCT. 5 23rd Annual
Quilt Auction,
Mount Calvary,
Excelsior, Minn

NOV. 29 Glad Tidings
Advent Dinner

*All events take place at
Luther Park unless
otherwise noted.*

OPEN HOUSE (cont. from p. 1)

of Luther Park, keep this wonderful Christian outdoor ministry moving forward.
FUN FOR ALL AGES!

Come join us July 20 at Open House 2013, and experience a touch of the wonder of a summer day at Bible Camp. Check out the buildings and grounds. Visit with summer staff members. Cruise the waters of sparkling Lake 26 on the camp pontoon boat, swim, canoe, hike, or try out a paddle boat. Or, just relax in the shade and delight in the quiet beauty that surrounds you at camp.

OVERNIGHT ACCOMMODATIONS

Overnight accommodations may be available in cabins or campground. Please call ahead, since space is available on a first-come basis. If you are interested in making a full weekend of the event, contact Dan Bennett, retreat host at 715.656.7244 or email: retreats@lutherpark.com.

LUTHER PARK FAMILY CAMP

ALL IN THE FAMILY-JUNE 28-30 and/or JUNE 30-JULY 5

Join us for a fun, faith-filled time where you can enjoy being with your family in the beautiful northwoods of Wisconsin. We'll explore special activities to help you grow and enjoy family life while experiencing our Summer Camp theme, Faith Alive! along with all the things at camp that you may not get to do at home: Hiking, swimming, boating, ropes course, arts and crafts, games and more. Accommodations available include: Log House, Cabins, Tree Houses, tent and RV camping. For more information contact Dan Bennett at 751.565.7244, e-mail: retreats@lutherpark.com, or check out our website at www.lutherpark.com.

LUTHER PARK GRANDPARENT/GRANDCHILD CAMP—JULY 26-28

This is a wonderful opportunity to spend time with your grandchildren while you pass on the heritage of faith and experience! Enjoy Bible lessons, nature, crafts, games, fishing, swimming, campfires and more. There are activities for all ages of kids as well as intergenerational opportunities. Accommodations available include: Log House, Cabins, Tree Houses, tent and RV camping. For more information contact Dan Bennett at 751.565.7244, e-mail: retreats@lutherpark.com, or check out our website at www.lutherpark.com.

LUTHER PARK WISH LIST

Listed below are some of the camp's current needs. Perhaps you don't have any of them on hand, but would like to give a special gift or a gift in honor or memory of someone.

To contribute toward any of these items, please make a check out to Luther Park, note your wishes and mail to: Luther Park, 30376 Lakes Drive, Danbury WI 54830-9508.

* URGENT NEEDS *

Reliable passenger car/van
Golf cart (to transport guests)
New computer

SPECIAL NEEDS

Maintenance:
Four-wheeler
Rubber floor mats
Wire-Feed welder
3' X 5' Commercial Entrance Mats (15)

Kitchen:

Serving bowls/trays
Cake Servers
Big frying pans
Ice maker

Program:

Portable DVD player with screen
Crayola markers
Seed beads & pony beads
White boards & markers
Permanent markers
Craft supplies

Office:

Copy paper (white and colored)
Cork board

THANKS FOR THESE GIFTS!

40' dock (donated & delivered)
Shower door & install.
2-way radios
Versatile high chair/Laugh & Learn
20 shares Bemis stock
Simplicity snow blower
Fishing & waterfront equip.
Video camera & tapes
100 shares of GE stock
100 shares of JCT stock
Frances Anne Hopkins painting
Log Luger for campfire pit
Material and labor for Pine Cabin renovation
Material and labor for the gazebo

Summer Camp Information

TO REGISTER:

- ✓ Register Early! Some weeks and programs fill quickly.
- ✓ Select a program based on the grade your camper will complete in June 2013.
- ✓ Completely fill out the Registration and Health History Form for each camper. Luther Park requests that the health form shown on this page be filled out each year. Parent or guardian and camper signatures must be on the form. The state of Wisconsin requires a physical exam be completed less than 36 months prior to arrival at camp. However, proof of a physical exam is required only if the camper is under the care of a physician for a medical concern, and it must then be signed by the examining physician and received at camp two weeks prior to the camper's arrival.
- ✓ Send the Registration and Health History Form with a \$200 deposit to Luther Park. The deposit is not refundable and non-transferable after May 1.
- ✓ Final payment is due at the camp office two weeks prior to arrival at camp.
- ✓ Upon receipt of registration materials, confirmation, directions to camp, and notice of balance due along with other important information will be e-mailed to you, unless you direct otherwise.
- ✓ Registration is on a first-come basis.
Mail to: Registrar, Luther Park Camp, 30376 Lakes Drive, Danbury, WI 54830-9508
Phone: 715/656-7244 Fax: 715/656-3013 Email: camp@lutherpark.com
Web site: www.lutherpark.com
You can also register online at www.lutherpark.com

Luther Park Bible Camp Code of Conduct

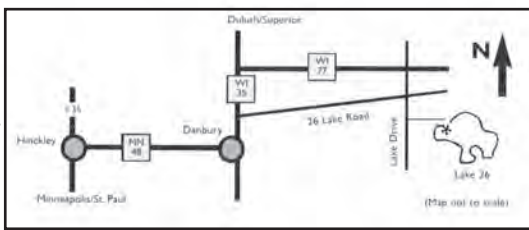
1. Respect other people and their property. Respect is the most important tradition we have at Luther Park. We expect that you respect yourself, others and their property, Luther Park staff, nature and God. A part of respect is treating others as you would want to be treated. The following will not be allowed: racist comments, teasing, fighting, threats, swearing, and any other behavior that is demeaning to another person. We want a positive week for all who attend camp.
2. Safety is our number one concern at all times. Obeying all waterfront rules when: swimming, boating, canoeing and fishing allows everyone to have fun in the sun. Waterfront activities are available only when waterfront staff is on duty.
3. Campers must be accompanied by a Luther Park staff person whenever outside of camp property.
4. We are pleased to offer an alcohol-free, smoke-free and substance abuse-free environment. Exceptions must be approved by the director.
5. Luther Park is a weapon-free environment. Campers may not bring any kind of weapon or explosive device, including firecrackers to camp. Use of any object as a weapon to hurt a person, animal or property will not be tolerated.
6. Luther Park reserves the right to store campers' personal items that may be inappropriate to their stay. Items will be returned for the trip home upon permission of the parent(s).
7. For your protection, all medications (including non-prescription pain relievers) must be turned in to the camp health supervisor. If you are injured or do not feel well, report at once to your counselor or health supervisor. This is important for your safety and for the good of all campers.
8. Every camper is expected to follow the entire camp schedule unless excused by the program director.
9. To assure the safety of each camper and to provide the best week possible, campers are expected to follow all Luther Park rules that are presented to them while at camp.

How to get to Luther Park

From Twin Cities:

Take I-35 to Hinckley, Minn. Go E. from Hinckley on Hwy. 48 (about 30 mi.) to Danbury, Wis. Then N. on Wis. Hwy. 35 for 2 mi., and E. on Hwy. 77 for about 5 mi.

(Watch for white arrow sign on right side of road.) Turn right on Lakes Drive, go about 2 mi. to stop sign. Go straight ahead at stop sign & up driveway to Lodge—a large brown build-



ing on the left side.

From Duluth: Go to Superior, Wis. Take Wis. Hwy. 35 S, then E. on Wis. Hwy 77 (about 5 mi.

—watch for white arrow sign on left-hand side of road). Turn S. on Lakes Dr. Go about 2 mi. to stop sign & continue to driveway to Lodge. **WELCOME!**

2013 SUMMER SCHEDULE

Date	Cabins	Tree Houses	Canoe Trips	Sr. High Leadership
June 16-21				Gr. 10-12 Lead. Mentoring*
June 23-26 (Cabins only, 3-nights/4 days)	Gr. 1-4			
June 23-28	Gr. 3-6	Gr. 7-9	Open for Group	Gr. 9-12 Lead. Training
June 28-30 or June 30-July 5	Family Camp	Family Camp		
June 30-July 3 (3-nights/4 days, cabins only)	Gr. 1-6			
July 7-12	Gr. 7-9	Gr. 3-6	Open for Group	
July 7-19	Gr. 7-12	(Double Week)		
July 14-19	Gr. 7-12	Gr. 3-6	Open for Group	
JULY 20 — SUMMER OPEN HOUSE — EVERYONE WELCOME!				
July 21-26	Gr. 3-6	Gr. 7-9	Open for Group	Gr. 9-12 Leadership Train.
July 26-28	Grandparent/Grandchild Weekend Camp			
July 28-31 (3 nights/4 days, cabins only)	Gr. 1-4			
July 28-Aug. 2	Gr. 3-6	Gr. 7-12	Open for Group	
August 2-5	Senior High Leadership Camp (Group Registration)			
August 5-8	Junior High Leadership Camp (Group Registration)			



Special Programs not listed above:

Teens in Mission: (TIM) Team-Youth Group. Group registration required.

Great Lakes Mission Trip: Each week (June, July & August). Group registration required.

Cornerstone Mission Trip: Up to 10-day intergenerational program, weekends through week. Group registration only.

NOTE:

* Must have attended either Leadership Training or TIM Team Training prior to attending Leadership Mentoring.

Canoe trips by group registration only.

FEE SCHEDULE

REGISTER FOR A 2ND WEEK (EQUAL OR LESSER VALUE) FOR HALF PRICE!

	Member/Non-member*
3-Night Camp	\$295-315
One Full Week	\$430/450
Double Week	\$700/760
Sr. Hi. Leadership Programs	\$445/465
Great Lakes Mission Trip	\$450/450
Cornerstone Mission Trip (Intergenerational)	Varies

Below Includes 1 free week:

Leadership Training, Leadership Mentoring, TIM [Teens in Mission] Campground \$18 per site/per night: \$20 with elec.

All Fees Cover: meals, lodging and program materials (except Campground). Fees do NOT include transportation. Round-trip transportation: \$80; one-way transportation: \$60. Not refundable. Camper pick-ups at: House of Prayer (Richfield) and Elim (Robbinsdale). Transportation available only for weeks of July 7-12, July 14-19, and July 28-August 2.

NOTE: Camper fees shown are subsidized by gift allocations. Actual cost per camper, per week is \$600. Check with your church about camp scholarships.

*Non-member churches are those that are not members of the Luther Park Corporation.

2013 Luther Park Registration and Health Form

COMPLETED FORM MUST BE SIGNED BY PARENTS/GUARDIAN AND CAMPER (Please Print)
A \$200 DEPOSIT IS REQUIRED FOR REGISTRATION

Name _____ Grade Completed _____ Age _____ Sex _____ Birth Date _____

Camp Date: _____ Cabin Mate: _____

Camper E-mail Address _____

Registering for: Cabin Tree House Canoe Double Week

Leadership Training Leadership Mentoring TIM Team Great Lakes Mission Trip

Congregation _____ City _____ Amount paid by church \$ _____

Transportation: (✓ check one) I will: provide my own transportation
 need transportation to and/or from camp.

Transportation to camp available only for weeks of: July 10-15, July 17-22, July 31-August 5.

(\$80 round trip/\$60 one way) Check (✓) one if you are riding the bus round trip one-way
If one-way, note which way _____

Elim Lutheran/Robbinsdale House of Prayer/Richfield

Method of Payment: Check/Money Order (Payable to Luther Park)

Discover Master Card Visa AMEX Amount \$ _____

Acc't. # _____ CSC: 3 digit# on credit card _____

Expir. Date _____ Signature _____

Custodial Parent(s) Guardian(s)

Address _____ City _____ State _____ Zip _____

Phone(s) _____ E-mail _____

Second Parent(s)/Guardian(s)

Address _____ City _____ State _____ Zip _____

Phone(s) _____ E-mail _____

Emergency Contact _____ **Emergency Phone** _____

Parent's Signature _____ **Date** _____

INSURANCE INFORMATION

(Please fill out completely & send copies of both sides of camper's insurance cards)

Camper Name _____

Policy Holder _____ Birth Date of Policy Holder _____

Employer _____

Insurance Co. _____ Insur. Co. Address _____

Insur. Co. Phone _____ Group No. _____ Policy/ID No. _____

Family Doctor/Phone _____

Immunization Dates: _____ DPT Shots _____ Polio Immunization _____

_____ Tetanus Booster _____ MMR _____ Tuberculin _____

Conditions: Asthma _____ Epilepsy _____ Diabetes _____ Heart Trouble _____ Other _____

Allergies: Insect Stings _____ Poison Ivy _____ Hay Fever _____ Penicillin _____

Other Drugs _____ Other _____

Medications: _____ This person takes NO medications on a routine basis.

_____ This person takes medication as follows: _____

(Luther Park administers medications only according to prescription label.)

Special Needs Campers: (Dietary, health restrictions, mobility limitations, diabetes, seizures, etc.)

Please list: _____

My child has permission to engage in all camp activities, except as noted by myself and the examining physician. In the event I cannot be reached in an emergency, I give permission to the physician selected by the camp director to hospitalize, secure proper treatment for, to order injection, anesthesia or surgery for my child as named below. I voluntarily waive any claim against the sponsoring institution, local churches and camp personnel for any mishap or lost articles, or any and all causes which may arise in connection with activities of the above organization. I understand that unless I provide separate written notice, photos taken of my child at camp may be used for camp-approved publications such as the Luther Park Echoes. **My child and I have read the Luther Park Code of Conduct and agree to follow it. Inability to follow the Code of Conduct gives Luther Park the right to send the camper home without refund at the expense of the camper's parent/guardian.**

Signed _____ / _____
Camper Parent

Date _____