



Danbury, WI • ON LAKE 26

# LUTHER PARK ECHOES

from the point

VOL. 31, NO. 1

A NEWSLETTER FOR CAMPERS AND FRIENDS OF LUTHER PARK

SPRING / SUMMER 2021

Ready to get back in  
the swing of things?



## HAPPENING THIS SUMMER



### Camp On-Site

Traditional summer camp planning is underway! Luther Park is excited to run three weeks of traditional, overnight summer camp. Each week of camp will have its own theme. Let's celebrate holidays that we missed celebrating together during week 1, week 2 we will compete in different challenges in the 2021 Luther Park Summer Olympics and lastly, we will travel around the world and learn about the different cultures of our international staff. There will be extra precautions, smaller numbers on site BUT the same amount of FUN!

Find additional info on page 2.



### Family Getaways

Each weekend throughout the summer Luther Park is looking forward to welcoming families onto site for the perfect getaway weekend! All your meals will be prepared for you, the beautiful lake will be available for swimming, boating, kayaking, and paddle boarding and there will be plenty of activities ready for you to do or cozy spots for you to relax. Families of all shapes and make-ups are welcome with grandparents/grandchildren, aunts, uncles, cousins...and more!

Find additional information on page 7.



### Camp At Home

There are still many unknowns about summer 2021, but you can count on Luther Park's Camp @ Home program to bring some camp joy to your home this summer!

Camp @ Home is made up of two different elements, the first being Camp-in-a-Box and the second is a Virtual Camp experience. Campers can choose to participate in both or just receive a Camp-in-a-Box to do on their own.

Find additional information on page 7.

### TAKE A PEEK INSIDE

Details about Summer 2021:

Camp On-Site.....	2
Camp at Home.....	7
Family Getaways.....	7

Help Restock Arts & Crafts!.....7

Messages from:

Scott, President.....	3
Joel, Executive Director.....	3
Leah, Associate Director.....	2

Thank you Tom & Janet.....6

Thoughts from a Counselor:

Greta Delaune.....	2
Online Camp Store is Open!.....	7
Ways to Give.....	6



### 2021 Bike-A-Thon: CHOOSE YOUR OWN ADVENTURE STYLE!

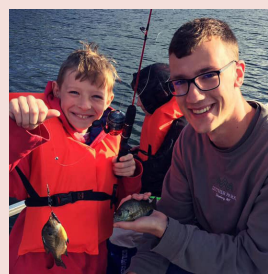
This year the Bike-a-Thon will look a little different than it has in year's past. Not only will there be a group riding to camp but there will also be groups and individuals riding locally over a course of a couple weeks. With this "choose your own adventure" Bike-a-Thon you get to choose what works best for you. Let us know how you would like to participate by signing up at [www.lutherparkdanbury.com](http://www.lutherparkdanbury.com) and we will support you as you help raise funds for Luther Park's ministries.

Find additional information on the back page.



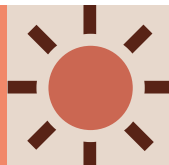
### Are you or do you know a young adult who is looking to make a difference?

Being on summer staff at Luther Park not only gives you the opportunity to make a difference in another's life but will also change your life! You get to work closely with many children, youth, peers and other adults in a fun, Christ-filled environment. Expect to discover new things about yourself, God and the world around you all while having the best summer of your life! Camp work is hard work but very rewarding, so applicants must be willing to be challenged, open-minded and adaptable to many unexpected situations. We are currently hiring for specialty and counseling positions.



Apply at [www.lutherparkdanbury.com](http://www.lutherparkdanbury.com). Contact Leah McDougall with questions at [camp@lutherpark.com](mailto:camp@lutherpark.com) or 651-472-4868.

# Camp On-Site Details



## Schedule

Summer 2021 will be a special summer as each session of camp will be themed differently. We will still have an overarching Biblical theme and do all the fun things we know of as “camp.” Think of these sessions as the camp you know and love, but with a fun twist! All sessions of camp will be hosted in the cabins on Mainsite. There are half and full week options for camp sessions held during the week.

**June 18-20**  
**Middle & High School Weekend (Grades 6-12 completed)**  
 This weekend is just for middle and high school aged campers! Expect to have a weekend of late nights, campfires, games, crafts, hanging out, lake time and much more!

**June 27-30 or June 27-July 2**  
**Holiday Week (Grades 1-12 completed)**  
 Let's do a year long list of Holidays in July! Imagine a whole year worth of holidays in one week. Thanksgiving, Christmas, Valentines Day, Easter and more!

**July 11-14 or July 11-16**  
**Olympics Week (Grades 1-12 completed)**  
 Compete (safely and creatively) with other cabins in the Luther Park Olympics! Be ready to sport your competitive and playful spirit!

**July 25-28 or July 25-30**  
**Around the World Week (Grades 1-12 completed)**  
 We are traveling around the world this week! Come eager to try new foods, learn about new cultures and “travel” to different parts of the world all while at Luther Park!

## Fees

For 2021, Luther Park is doing Tiered Pricing for half/full week camps. This means that families get to choose the amount that their family can pay for camp. We understand that COVID-19 has affected families in different ways and don't want a financial reason to stop families from experiencing camp. Tier 3 is the true price of a week of camp, while Tier 1 and Tier 2 are subsidized costs from our Annual Fund. We think camp is so important for our young people that we work hard to raise funds for everyone to experience camp! If you are in need of more financial assistance, there is a scholarship form to fill out upon registration.

	Tier 1 48% subsidized by gifts	Tier 2 28% subsidized by gifts	Tier 3 closest cost to true value
Half Week	\$260	\$360	\$460
Full Week	\$290	\$440	\$610

## Safety Protocols

Luther Park will be taking the necessary precautions in order to provide a safe camp experience. For a full summary of these protocols please visit [www.lutherparkdanbury.com](http://www.lutherparkdanbury.com) and click “COVID-19 updates”.



## Cancellation Policy

In the event that your family needs to cancel because of a COVID-19 related exposure, sickness, symptoms or concern, your payment will be refunded. For all other cancellations after June 1, the \$50 deposit will not be refunded.

## Thoughts from a Counselor... GRETA DELAUNE



This past summer looked different for everyone, including the staff at Luther Park. While we were unable to meet as a large group, the staff community was able to create something equally special for counselors and campers alike. Through weeks of hand-picking Bible verses, revamping camp games, recording (and rerecording) the beloved ‘Never Ending Love Song,’ and curating a variety of s’mores recipes, the staff had a blast developing the Camp-in-a-Box experience.



It being my first year on staff, I was thrilled to be able to join others and develop a community within these new relationships. Our group quickly hit it off through pontoon rides, early-morning devos, and even through the cleaning of communal spaces. As a staff we were split between camp maintenance, program development, and administrative duties, but we always ended the day in each other's company. Throughout the summer we also took turns leading devotions, learning about the Enneagram, and wrestling with our faiths. As we all came from different walks of life, we learned from each other another through guided questions and conversation. These experiences deepened my faith as I learned that there can be space for confusion, doubt, and questioning of biblical language and practices. When conversing with the campers over Zoom, I was overwhelmed with joy as Bible studies and craft time became the highlight of both the campers and the counselors' days. The wisdom and delight that the campers shared with the counselors is something I will cherish forever. While Luther Park surely looked and continues to look different from previous years, its message, comfort, and spirit continue to prevail. 🏕️

## A Message from the Associate Director

Leah McDougall

God's Creation amazes me all the time! And these amazements are constant reminders that beautiful things often come from the least of expected places or situations. The summer of 2020 was an emotionally difficult summer because there were still so many unknowns about COVID-19, about the future of the pandemic and what we “could” or “should” be doing or how we



“should” or “could” be feeling. It was often hard to see the beauty when so many people were facing illness, death, isolation and uncertainty. But as the summer staff arrived on site, new life began to sprout. Not only with the new relationships and ministries that were forming at Luther Park, but in new, unexpected growth of God's Creation.

God's daily reminder to me was through the pansies that started growing in the rocks next to the Welcome Center. This was unexpected because pansies lived in pots on the steps of the Welcome Center in 2019 and were not purposefully planted to grow in the rocks. This means that seeds of the pansies had blown from the pots, to the rocks, laid dormant for a year through ice, cold and snow and then gained enough nutrients, sunlight and water to start a sprout. These sprouts turned into beautiful flowers and added so much beauty to the front of the Welcome Center, the building that most of our planning and preparation for 2020 ministries happened. God has amazing ways of reminding us to slow down, to admire and then be inspired by the beauty to then go out and spread joy, love, peace and hope to others. 🏕️



**A Message from  
The President**

**Scott Housman**

Have you ever just sat outside on the lake or in the woods in the middle of winter?

It's something I have to do each year for my own personal recharge and renewal. It brings me serenity, peace and a closeness to God that can't really be explained. There is something about intentionally being outside during a time of year that we generally spend so much time indoors.

The wind on my face, the sounds of the surrounding area and the feel of the ground crunching under my feet are all different than that of summer. Luther Park is quieter during the winter as fewer people frequent the camp, so I get to experience the unusual quietness of camp. And in those moments is where God reaches me at new depths. It is truly life changing.

Luther Park is a retreat space for me year round. Although Luther Park is gorgeous and a perfect spot during the warm periods of the year, there is something so special about camp during the winter. I really wish you could try it yourself. I encourage you to come to camp at a time when you are in need of renewal and recharge- no matter what time of year! 🏕️



**A Message from  
The Executive  
Director**

**Joel Legred**

*Happy are those who...delight in the law of the Lord...They are like trees planted by streams of water. Psalm 1:1-3.*

God must have had fun creating the natural habitats we enjoy at camp. God's vegetation is thrilling to view but the greenery holds hidden benefits. Studies show that trees and forests boost the immune system, lower blood pressure,

reduce stress, improve mood, and increase the ability to focus, even for children with ADHD. Time amongst the moss and timber accelerates recovery after illness or surgery, increases energy levels, and improves sleep. Makes you want to linger among the leaves, doesn't it?

Lake 26 doesn't hurt either. Research has shown that our body and mind tend to have a personal and emotional relationship with water. We're more relaxed, less stressed, and calmer with the sounds and sights of waves and water life.

Time among the wild things deepens our appreciation of God's daily gifts. People say they experience a thankfulness, a full heart, a renewed zest for life.

Every time I walk the woods, I'm reminded of all the people who make this ministry possible. I'm grateful for hidden angels who write checks and send gifts that quietly arrive by mail. I'm inspired by campers who leave their extra canteen money behind for the camper-to-camper fund giving other kids a chance to come to camp. I'm thankful for volunteers whose labors are seen in repairs and maintenance, new roofs and safe trails, and you name it.

There are hidden benefits of becoming a camper, retreator, volunteer or donor. You are part of something larger, a God-sized picture. You are helping others have better, more fulfilling lives with God. You are providing a natural habitat where people of all ages will know God's love and grace is for them and for all. Come. Walk the woods. Linger by the lake. I guarantee that you'll feel gratitude for all of God's benefits. 🏕️



**Luther Park ECHOES - From the Point**

is published by the Luther Park Corporation, a non-profit organization affiliated with congregations of the Evangelical Lutheran Church in America (ELCA), and other Lutheran congregations, to share the news and ministry of Luther Park Camping and Retreat Center with campers and friends of Luther Park. The camp is located at 30376 Lakes Drive, Danbury, WI 54830.

Editor/Writer/Designer: Loren Seel (hello@lorenseel.com)

*Pictures, information and opinions are welcomed and encouraged. Call or send to: Luther Park, 30376 Lakes Dr., Danbury, WI 54830 • Phone: 612-987-6628*

**YEAR-ROUND LP STAFF MEMBERS**

Joanne Anderson, *Food Service/Housekeeping*    Joel Legred, *Executive Director*  
 Marcia Brace, *Office*    Leah McDougall, *Associate Director*  
 Pete Brace, *Maintenance*

**WELCOME  
NEW  
BOARD  
MEMBERS**

**Newly elected in 2021**

Eric Klein - Diamond Lake  
 Caity Wright - House of Prayer

**Elected to another 2 year term**

Deana Miller - Zion  
 Jim Warren - Nativity

**Board Members in the 2nd  
Year of their 2-Year Term**

Eric Boyd - St. Barnabas  
 David Shirley - Messiah  
 Tom Nelson - Elim  
 Suzie Bergquist - Family of Christ  
 Scott Housman - Mount Calvary  
 Anna Treague - Lakeside

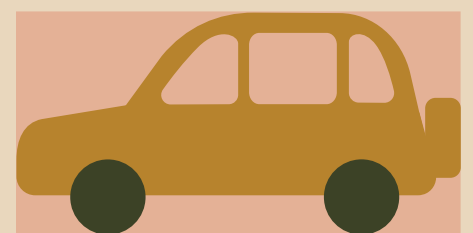
**Thanks to outgoing  
Board Members for their  
dedicated service!**

Candace Cobb - Diamond Lake



**DO YOU HAVE A CAR YOU CAN DONATE?**

Donating a vehicle is easy to do, and you can receive a significant tax savings. If you are interested in learning more call Joel Legred at 612-987-6628 or email: [jlegred@lutherpark.com](mailto:jlegred@lutherpark.com).



**Thrivent Choice, Employee Matching Program  
and Thrivent Action Plans Benefit Luther Park**



**THRIVENT  
FINANCIAL®**

**(A TOTAL OF OVER \$4,000 RECEIVED IN 2020)**

**Thrivent Choice**

If you have a Thrivent Financial policy, you may be able to help Luther Park through their Thrivent Choice program. Through this, you can help direct the company's charitable dollars to Luther Park. Call 1-800-847-4836 or visit [www.thrivent.com/thriventchoice](http://www.thrivent.com/thriventchoice) to direct your Thrivent Choice dollars to Luther Park.

**Action Plans**

Thrivent Action Plans are another way policy holders can help Luther Park. You can set up an Action Team project that benefits Luther Park and visit the Thrivent website to apply. When approved, you will receive a \$250 gift card to be used toward the project or gift it to Luther Park to utilize it for the project.

**Employee Matching Program**

Thrivent also has an Employer Matching Program that matches contributions their employees make to non-profit organizations. Luther Park has benefited through this also.

**LUTHER PARK SAYS THANK YOU TO THRIVENT AND ITS MEMBERS FOR THESE OPPORTUNITIES TO PROVIDE FINANCIAL GIFTS TO THE CAMP!**

# OVER THE 63 YEARS YOUR GIFTS HAVE MADE SIGNIFICANT IMPACTS ON SO MANY LIVES!

## 2020 HONORARY GIFTS (1-1-20 TO 12-31-20)

IN HONOR OF	GIVEN BY
Nancy and Terry Couillard	Diane Chambers & Don Parisson
Grandchildren	David and Marlys Ranney
Paul Gustafson	Robert and Kathy Gustafson
Joel and Brenda Legred	James and Carol Kane
Young Joey Legred	Pastor Mark Orvick
Loved Ones	Thomas and Patricia Dooley
Deana Miller	Lu Ann Giles
Sharon and Burt Miller	Donald Notvik
Hildy Palo	Stephen Palo
Rev. Bob Quam	Barbara McCauley and Gary Horejsi
Ben Rakde's graduation from HS	Judy Radke
Caity Wright	Cynthia Jacobs Lisa Rutt



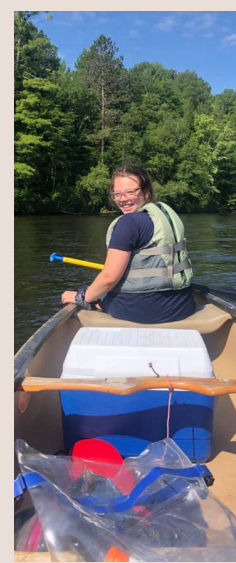
**Mission Statement**  
Luther Park is a cooperative ministry of ELCA and other Lutheran congregations serving people of all ages through a variety of programs in an outdoor setting. Our Mission is to provide an environment in which the Christian faith may be strengthened and people may grow in their personal relationship to God.



## 2020 MEMORIAL GIFTS (1-1-20 TO 12-31-20)

IN MEMORY OF	GIVEN BY	IN MEMORY OF	GIVEN BY
Ted Allen	Carlton and Dorothy DeClercq	Gayle Mattson	Joel and Brenda Legred
Gordy Anderson	Roger and Mavis Peterson		Susan Mattson
Dick Arntson	Richard and Karen Arntson	Chris Morton	Lori and Cal Wright
Fran Challman	Olga Challman		Ardi Benson
Joseph Dow	Doug and LuAnn Waller	Betsy Nordby	Joel and Brenda Legred
			Kevin and Paulette Legred
Glenn Gillund	Paul and Kris Gillund Evangeline Gunderson	John and Sharon Okerstrom	Norm and Kim Okerstrom
Cole Gustafson	Darelyne Gustafson	Pastor Orv Olson	Lori and Cal Wright
John R. Hanson (Uncle Richard)	Janet and Jim Froberg	Rudy Palo	Stephen Palo
Barbara Hechel	Ronald Heschel	Gordy and Marlys Peterson	Duane and Monica Anderson
Joyce Hegstrom	Robert Hegstrom	Dennis Prehn	Mark and Wendy Wersal
Ken Herman	David and Leslie Gilyard	Joan Schmidt	Ed Schmidt
Ken and Joan Herman	Paul and Barbara Johnson Alan and Cindy Olson	Michelle Sisson	Gary Sisson
Betty and Gordon Hughes	Chuck and Betty Hughes	Betty and Bob Slater	Joan Slater
Carl R. and Marilyn Johnson	Randy Johnson	Nathan Stamp (Grandson)	Donald and Nona Stamp
Matthew Kesti	Gerald and Sandra Doran	Bill Stenzel	Donna Stenzel
Dieter Lang	Darlene Lang	Elwood Swanson	Bonnie Swanson
	Jim and Carol Kane	Ardus Tamlyn	Tim and Malinda Tamlyn
	Ardi Benson	Tuck Thomas	Sherrie Thomas
Arlen Legred	David and Leslie Gilyard	Dick Tornowske	Judy Tornowske
	Joel and Brenda Legred	Sheryl Wegner	Ken Wegner
	Corrine Orvick	Margie Wold	Roger Wold
	Alicia and Nathan Shutes		
Kurt Legred	Joel and Brenda Legred Donna Stenzel		

TO RECEIVE A MEMORIAL/HONORARY GIFT PACKET FOR FUTURE USE, PLEASE CALL CAMP AT 715-656-7244.



# THANKS FOR MAKING A DIFFERENCE!

# Ways To Give

## DONATE ITEMS

### Urgent Needs

- Reliable Passenger Car/Van
- Dehumidifiers
- Gas Cards (Prefer Speedway or Holiday)
- Wilson Amplifier
- Pillow Protectors
- Kayak Paddles

### Maintenance

- Rakes
- Shovels
- LED Light Bulbs
- Chain Saws & chains
- Wire-Feed Welder
- Work Gloves
- Screen for windows (regular and "dog" screen)

### Arts & Crafts

- Scrapbook Paper
- Markers
- Construction Paper

### Program

- Projector with HDMI input
- Spark Story Bibles
- Boxes of "duraflame firestart" for starting campfire
- Solar Powered Lanterns
- New or Gently used Canoes

### Housekeeping

- Plastic and Cloth Shower Curtains
- Waterproof mattress covers - twin and queen
- Pillow Protectors
- Box Fans
- Gently used Top load washer & front load dryer
- Special Needs for Retreat Center
- Microwave
- 4 Piece Toaster
- Luggage Rack for closets
- Bath Towel Sets -- dark colors

### Special Needs for the Log House

- New or Gently used Pots & Pans Set
- Kitchen Cloths and Towels
- Non-scratch kitchen and cooking utensils

### Kitchen

- 8 Cup Food Processor
- Commercial Electric Steam Table

### Sports Equipment

- Soft Dodgeballs
- Soccer balls, Basketballs, volleyballs, kick balls
- Soccer Nets (2 - 12x6)
- Disk Golf Goal Basket
- Ball pump

### Office

- Laminating sheets for GBC Laminating machine
- Copy paper (white and colored)
- Card Stock (white and colored)
- Poster Board
- Bulletin boards for cabins
- White boards & markers
- Batteries (D, AA, AAA, 9V, CR2032)

### Waterfront

- Kayak Paddles
- New or Gently Used Canoes

## DONATE MONEY

Our donors are very generous and have been for 60+ years. This past year is no different! Despite all the challenges, hardships and changes we have all experienced, God is still good and provides. Luther Park's donors came through in 2020. Thank you for those donations!

As we are planning for summer 2021, we assume that there are many families who have experienced or may experience financial hardship and may need assistance paying for summer camp. Contributions towards Luther Park help us keep the promise that no camper or family will be turned away because of financial difficulties. Thank you for your generous donations that ensure the ministry of Luther Park will stay healthy and thriving!

### Ways you can donate funds:

- Paypal ([paypal.me/lutherparkdanbury](https://paypal.me/lutherparkdanbury))
- Venmo (Friend "Luther Park Danbury, WI" if the last 4 digits of a phone # needed use 6628)
- Mail a Check (Luther Park - 30376 Lakes Dr. - Danbury, WI - 54830)
- Give us a call and donate over the phone (Joel, 612.987.6628)
- Employer match giving or other employer contributions for non-profits (Check with your employer and ask if they have match giving or provide financial contributions to your favorite non-profit, Luther Park!)

## DONATE TIME

Luther Park is a beautifully maintained site because of our dedicated volunteers! When a team comes together with a common goal, a lot gets done and a lot of fun is had. Be a part of our volunteer team this spring, either one day or all three. **Work days this spring: April 17th, May 15th, and June 12th.**

Visit <http://www.lutherpark.com/volunteer.html> for the most updated information on volunteer projects around camp.

If you are interested in being a part of this team of monthly volunteers, contact Joel Legred, Executive Director, 612-987-6628 or [jlegred@msn.com](mailto:jlegred@msn.com).

We are taking COVID-19 precautions to help keep out volunteers safe. We ask that you wear a mask and social distance while at Luther Park.



## A BIG THANK YOU TO TOM & JANET NELSON!

Tom, a Graphic Designer, and Janet, a retired Teacher, were the team that have put together the Echoes for the past several years. Twice a year they would gather with the staff and brainstorm article ideas, then they would work hard to write, edit and put together the Echoes newsletter. Tom also has worked on many other publications over the years which have been much appreciated. Tom and Janet are excited to pass this project on so that they can focus on spending time with their grandkids and making lots of time for road trips in their camper!

Have you seen the new Luther Park logo and design? Loren Seel, a Graphic Designer, is now being contracted with Luther Park as the Publications Designer. She is taking over the Echoes Newsletter and other Luther Park publications. 🏠



## Leave a legacy of God's Love

Would you like to leave a legacy for future generations that reflects your faith and values?

The Luther Park Legacy Society has been created to help friends of Luther Park leave a legacy.

Legacy gifts to Luther Park will be a seed planted in good soil, because it will help people of all ages deepen their faith in Jesus. You can provide a legacy gift through a life insurance policy or a will bequest. If you have already completed your will, a codicil can be added at a nominal charge.

For additional information, please contact Joel Legred at 612-987-6628 or email [jlegred@lutherpark.com](mailto:jlegred@lutherpark.com).



# Camp at Home



## Camp-in-a-Box

Camp-in-a-Box includes 5 weeks of intentional activities for campers to do at home. This box can be done at whatever pace you would like or can be done with the Luther Park camp staff via Virtual camp. Boxes will be delivered mid-late June.

Each week includes: a high quality craft, a bible discovery lesson, a spiritual practice activity, a family challenge, additional activities related to theme and videos posted on Luther Park's Website/Facebook/YouTube about the weekly theme, worship songs, craft instructions, etc.

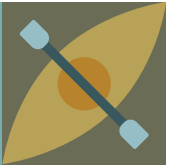
## Virtual Camp

For five weeks throughout the summer, Luther Park will be offering Zoom gatherings for campers and trained camp staff to interact, explore the Bible and do the activities together from Camp-in-a-box. Virtual Camp is an optional part of Camp @ Home, families may choose to just purchase the box and not participate in Virtual Camp.

This part of the program is projected to start late-June. Dates will be determined upon registration numbers and interest.

"A social distanced ice cream & outdoor game social will be hosted at a local church or park near the Twin Cities after the completion of the Camp @ Home program. Date and location are TBD.

# Family Getaway Details



## What's Included?

- All meals and snacks prepared for you (6 meals for a 2 night stay, 8 meals for a 3 night stay)
- Access to game/sport spaces like the Volleyball Courts, Basketball Court, Gaga Ball Pit and Game Room!
- Use of the Waterfront (swimming, kayaking, canoeing, paddle boarding)
- Prepared crafts, Bible devotions, family games/activities, and other family spiritual practices
- Staff led (social distanced) worships, campfires, and other activities

## Schedule

All dates are Friday-Sunday (or Monday for extended weekends)

- Session 1: June 25-27
- Session 2: July 2-July 5 (extended weekend)
- Session 3: July 9-11
- Session 4: July 16-18
- Session 5: July 23-25
- Session 6: July 30-August 1
- Labor Day Weekend: September 3-6 (extended weekend)

### Weekends don't work for you?

Contact camp! We may be able to host you during the week.

## Fees

We work hard to raise funds for all to have the life changing experience of camp - we don't want finances to be the reason that families don't experience camp! All children 4 and under are free. Scholarships are available for families who are in need of assistance.

### Cabins

- \$101 (\$151\*) per adult/child over 12
- \$52 (\$77\*) per child age 5-12

### Treehouses

- \$81 (\$131\*) per adult/child over 12
- \$42 (\$67\*) per child age 5-12

### Log House

- \$111 (\$161\*) per adult/child over 12
- \$57 (\$82\*) per child age 5-12

### Campground

- \$71 (\$121\*) per adult/child over 12
- \$37 (\$62\*) per child ages 5-12

### Retreat Center

- \$121 (\$171\*) per adult/child over 12
- \$62 (\$87\*) per child age 5-12

\* Indicates price for extended weekends.



## Cancellation Policy

In the event that your family needs to cancel because of a COVID-19 related exposure, sickness, symptoms or concern, your payment will be refunded. For all other cancellations after June 1, the \$50 deposit will not be refunded.

# CAMP STORE IS NOW OPEN ONLINE

Our online canteen store is now **LIVE!** Go to <https://lutherparkdanbury.square.site/> and pick from your favorite items at camp! From T-Shirts to water bottles and even blankets, this site will allow you to get some of the best souvenirs camp has to offer shipped to your home!



### CANTEEN ITEMS:

- Adult and Youth Short Sleeve T-shirts
- Adult Crew Necks
- Adult Joggers
- Adult Sweatpants
- Adult Hockey String Sweatshirts
- Youth Sweatshirts
- Drawstring bags
- T-shirt Blankets
- Bandanas
- Nalgene Water Bottles
- Travel Mugs
- Tin Cups
- Lanyards
- Chip Clips

## CAN YOU HELP US RESTOCK ARTS & CRAFTS?

Arts & Crafts is a loved and favorite place of many campers. It's a space where campers can get creative and express themselves through art. Unfortunately, last summer we had a plumbing issue that caused a leak in Arts & Crafts and we lost a lot of our supplies. We are looking for:

- |  |                 |   |   |
|--|-----------------|---|---|
| • Scrapbook Paper                            | • Googly eyes   | • Pom Poms  | or Jars with Lids for storage           |
| • Stickers                                   | • Pipe Cleaners | • Baby food jars or Yoplait Oui yogurt containers for candle making | • Storage Drawers                       |
| • Acrylic or Tempera Paint                   | • Markers       | • Wooden Frames that can be decorated or painted                    | • Craft kits that are suitable for camp |
| • Paint brushes                              | • Small Canvas' | • Small Plastic Bins  | • Ribbon                                |
| • Glue (sticks, school, craft, or Mod Podge) | • Clothes Pins  |   | • Colored Popsicle Sticks               |
| • Colored Paper                              | • Felt          |   | • Sequins                               |
|  | • Foam          |   |   |
|  | • Cotton Balls  |   |   |

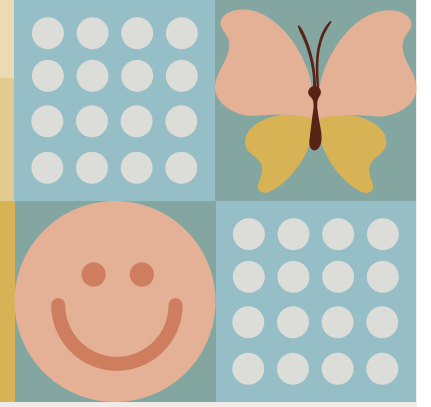
Things we have plenty of: yarn, fabric, colored pencils, and crayons.

If you would like to help repaint and reorganize Arts & Crafts you can join us on one of our Spring workdays - April 17, May 15 or June 12.

Thank you for your help!



# 23<sup>rd</sup> Annual LUTHER PARK BIKE-A-THON



## Choose your own BIKE-A-THON Adventure



### ADVENTURE #1

#### Bike with Others Locally or On Your Own

Ride with a group or individually in your local community during the weeks of August 15-29. Bikers can ride anywhere they want for as far as they want. Is biking not your thing? Participants can run, walk, hike, rollerblade, swim, etc. Any activity in which you can track miles works for the Bike-a-thon! Luther Park encourages churches or people to gather a team of riders together to either gain miles as a team or be there for each other for moral support. Participants of all ages can participate in this adventure. Minors can participate with a responsible guardian or parent.

### ADVENTURE #2

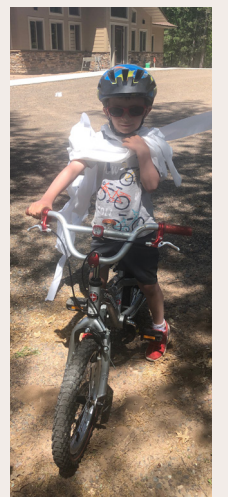
#### Bike with Others to Luther Park - August 28-29

Ride with a group of other bikers from Messiah Lutheran Church to Luther Park over the course of 2 days, August 28-29. The first day bikers can expect to ride about 75 miles and the second day they will ride about 40 miles. Bikers and Sag Van Drivers stay in a hotel in Luck, WI. Upon arrival to camp, the fabulous Luther Park kitchen staff will have prepared a wonderful buffet lunch. Riders are responsible for their own ride back to the cities but may coordinate to ride home in one of the Sag Vans. Registration for this adventure closes on August 1. Reserve your spot soon as space is limited. Participants must be 16+ to participate in this adventure.

### ADVENTURE ?

#### Want to participate but need a different option?

You can plan your own time and Bike-a-Thon event! Contact Joel Legred, Executive Director, and he will help you plan your own dates to either bike to Luther Park or create your own path. Phone: 612.987.6628 or Email: jlegred@msn.com.



## WE WANT YOU TO BE A TEAM CAPTAIN

We are looking for a team captain for each church or group of riders. This captain would be responsible for relaying information from camp to their team members, helping to motivate people to raise funds, encouraging people as they are riding and keep their team working together. If you are interested in being a team captain email Leah McDougall at camp@lutherpark.com or call her at 651-472-4868.

Register to be a participant or find more information by visiting our website [www.lutherparkdanbury.com](http://www.lutherparkdanbury.com)

