



www.lutherpark.com

CHANGE SERVICE REQUESTED

ECHOES

From The Point

Vol. 28, No. 2

A Newsletter for Campers and Friends of Luther Park

Fall/Winter 2017-2018

Summer Camp Theme for 2018: "This Changes Everything"

Our key summer verse for the week is: "For by grace you have been saved by faith, and this is not your own doing; it is the gift of God." (Ephesians 2:8)

This summer while many high schoolers are exploring this theme in Houston at the 2018 Youth Gathering many campers of all ages will be exploring this theme at camps across the country. The lessons are different so high schoolers can attend both the gathering and camp without doing the same thing. At camp, we will focus on how God's grace changes Our Hearts, Our Identity, Our Purpose and Our Community through

different stories in Matthew, Luke and Acts. It's because of Jesus that we know of God's desire for wholeness and life in a world that is broken. Everything changes through Christ. The grace of God changes how we see the world and how



we can continue to show grace to one another. Let's explore how God's grace has changed each other's lives this summer!

This summer is filled with many exciting and fun opportunities to experience Luther

Park, including full week and half-week camps, treehouse outpost camp (All God's Critters, Night Owl Camp), Family Camp, Grandparent/Grandchild Camp, canoe trips, and mission trips.

Here are some of the unique programs this summer:

Great Lakes Mission Trip: All the experience of camp and a mission trip in one week. Travel with your group to a mission site each day and spend the evening doing camp activities like games, Bible studies and campfire! Group registration only.

Mission Trip Cabin Camp: (Week 5): This week includes the integration of a mission trip experience and a camp experience. It includes your favorite camp activities like worship, campfires, games and Bible studies with a service element. Spend part of the day off-site, volunteering, and the rest of the day at camp doing camp activities! No group registration is required.

(continued on pg. 3)



LOOK INSIDE FOR

Remembering Hope Goodman	p.2
Open House	p.3
Another Way to Donate to Luther Park	p.3
2018 Summer Camp Information	p.6
Bikeathons	p.6
Leaving My Mark	p.7
2018 Retreat Information ...	p.8



COMING EVENTS



FEB 1-4 or FEB 2-4
Luther Park Scrap and Stamp Camp I

MAR 11 - Annual Meeting at Gustavus Adolphus Lutheran Church 1:30 - 3:00 p.m.

APRIL 21 - Ole & Lena Dinner and Silent Auction at Richfield Lutheran Church

APR 26-29 or APR 27-29
Luther Park Scrap and Stamp Camp II

MAY 6 Point and Cross Banquet of Blessings Thank You Dinner St. Barnabas Lutheran Church

MAY 27-JUNE 10 - Staff Training

JUNE 2-3 - Bike-A-Thon #1

JUNE 10 - Summer Camp Starts

JULY 13-14 - Bike-A-Thon #2

JULY 14 - Open House Celebrating 60th Anniversary)

Complete event information is available online at: www.lutherpark.com or call 715-656-7244

Retreat Center Construction Underway

We are excited to report that the construction of our Bethel Family and Adult Retreat Center is well underway! The Retreat Center will provide hotel-style rooms, flexible and comfortable meeting spaces, and fully accessible facilities for people of all ages.

Thanks to our corporate congregations and many friends, the total raised so far is nearly \$600,000. That helps us get part of the way there but not all the way to the finish line.

The camp still needs \$350,000 to complete the project. One church has said they will help us finish the project with a gift of \$100,000 if Luther Park can show that other churches and individuals are helping to get the project done so it can truly be a reality and we can open the doors of the center in fall 2018. Another congregation has offered to do a \$25,000 gift and hopes they will inspire other congregations and individuals to do something like that.

Please consider how you or your congregation might participate between now and next spring. We know that not everyone is in a place to help. If you are able to help, every dollar will count, and every gift will be powerful no matter the size. Some friends are even providing a portion of their gift in 2017 and the rest in 2018, enabling them to make an even larger gift than first anticipated!

Once the outside of the building is completed, volunteers will work on the inside of the center this winter. Next summer Luther Park will celebrate 60 years of ministry in 2018, so the completion of the Retreat Center will be a great way to celebrate. Thanks to all who have already helped! You can find out more about this project at: www.lutherpark.com/bethel-retreat-center.

If you have questions or would like to help, please contact Joel Legred, Executive Director of Luther Park, at 612-987-6628 or jlegred@lutherpark.com

7 Reasons to Support This Project

1. You will say "thank you" for God's **BLESSINGS** in your life.
2. You will **INSPIRE** others by your support of Luther Park's ministry.
3. You will help **BUILD** a much needed facility for Luther Park congregations.
4. You will **STRENGTHEN** church programs for youth and families.
5. You will **PROVIDE** a place for year-round retreat programming.
6. You will make Luther Park more **WELCOMING** for people of all ages.
7. You will **BUILD FAITH** for the future through Luther Park's exciting programs.

Naming & Memorial Opportunities

PHASE ONE

Worship & Gathering Space	\$40,000
Handicap Accessible Guest Rooms with Private Baths (4)	\$25,000 each
Welcome Lounges with Fireplaces (2)	\$15,000 each
Reception Area	\$15,000

PHASE TWO

Guest Rooms with Private Baths (12)	\$25,000 each
---	---------------



Like us on Facebook
www.facebook.com/LutherParkBibleCamp

A Message From The President

David P. Shirley



Generous For Our Future

“They are to do good, to be rich in good works, generous and ready to share, thus storing up for themselves the treasure of a good foundation for the future, so that they may take hold of the life that really is life” 1 Timothy 6:18-19 (NRSV)

If you have not been to Luther Park (or visited the lutherpark.com website) since September 2017; the long awaited Bethel Family and Adult Retreat Center is rapidly rising-up from the sandy soil at camp! The reality of this needed amenity for the Luther Park facilities has generated substantial and renewed interest in the project, for which the Phase 1 “core” building should be sealed-up by the end of 2017, with an anticipated completion of the interior for guest occupancy by September of 2018. Once Phase 1 of the Bethel Family and Adult Retreat Center has been completed, we hope to have Phase II (with 12 additional sleeping rooms in two close-by buildings) under construction to complete the multiple-building Retreat Village.

For those that have been closely following this process for many years, the Luther Park Board changed the originally envisioned single unit retreat building into a Retreat Village concept a few years ago, with the now completed Welcome Center housing several of the features that were in the original plans for a larger single building retreat center.

The generosity of Bethel and Mount Calvary churches, both of which being charter and founding members of Luther Park, Inc., was instrumental in starting this project. With the now visual reality of Phase 1, Luther Park staff and the volunteer Board of Luther Park, along with other volunteers, will not only be asking for you to consider a generous donation to the completion of this vision; we will also be soliciting volunteer labor to finish some of the interior elements. Please prayerfully consider how you and your church may support this effort, while reviewing articles in this issue of the Echoes (along with our website) highlighting opportunities to display your generosity. If someone does not contact you for a personal ask, please let us know and we will be delighted to discuss how you may help with this legacy project.

To all who have helped and are still helping the Retreat Village to become a reality, along with the tremendous support of your outdoor ministry over nearly 60 years, thank you!

A Message From The Program Director

Leah McDougall



Summer of 2017 presented many new memories, struggles, challenges, joys and revelations. It was my first summer as the Program Director but my fourth summer at Luther Park. Summer camp, now, from my role, is not always fun and games. The counselors hold the closest position to the campers, action and fun. They get to know and understand the campers and each other on a level my position does not always allow. I’m the one who gets to answer phone calls, respond to emails, prepare for the next week and mentor peers. I don’t always get the chance to stop and enjoy the moments of camper joy or bask in the great amount of community that camp provides or really admire the beauty that God is providing all around me. But, God still found ways to reveal Godself to me this summer.

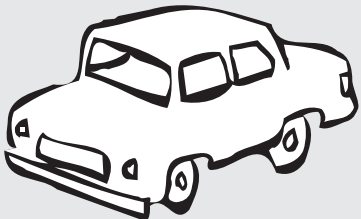
Two of those moments I would like to share. The first, was Monday nights at campfire. Instead of the counselors leading a lesson or a story, the campers were invited to share where they saw God, experienced God, or found descriptions of God. They were also invited to share which character or moments they thought God was present after they viewed the movie Moana. Every week I would get goosebumps, smile and ponder the answers that I heard. These campers, as young as seven, were really thinking about who, what and where God is. They were helping me understand God more deeply. These moments will forever shape how I describe God to others and how I experience God in everyday life.

The second moment was during my busiest week. It was towards the middle of that week when I was just praying for the week to be over so I could sleep. On one of my trips from Mainsite to Outpost, God was trying to get my attention. And God did! I felt the need to stop, take a breath and just stare at the beautiful sky God had created that night. It was in that moment of alertness I was reminded that God was really there. It was in that moment of beauty that I started to think about the beauty in each camper. It was in that moment of stillness that I remembered how much I would miss the commotion and excitement of the summer when it was over. And it is that moment that I hear God saying to me, “When you pass through the waters, I will be with you.” Just like our 2017 theme verse for Isaiah was trying to remind us of.



Do You Have A Car You Can Donate?

Donating a vehicle is easy to do, and you can receive a significant tax savings. If you are interested in learning more call Joel Legred at 612-987-6628 or email: jlegred@lutherpark.com



Remembering Hope Goodman

Hope Goodman, a former Luther Park counselor, passed away in September. Hope is remembered as a kind and loving person, who’s passions included her family, her faith, and of course her fishing. Many friends from Luther Park said she was so fun to work with and had a great laugh! One pastor wrote that “Luther Park was Hope’s spiritual home!” Hope’s sister Mary said Luther Park was a sacred place to her. A place to make new friends, a place to laugh with friends, a place to strengthen her faith, and a great place to fish! Hope was on staff at Luther Park the summers of 1991 and 1992, and returned a few times to fish! Hope loved fishing and the family has requested that donations to Luther Park would be used to memorialize her in some way that is related to her fishing passion! If you would like to contribute to that memorial you can do so online at www.lutherpark.com, or by sending a check to Luther Park, 30376 Lakes Drive, Danbury, WI 54830. Make sure you designate the donation to the Hope Goodman Memorial. 🏠



www.lutherpark.com
 Write: 30376 Lakes Drive
 Danbury, WI 54830-9508
 Phone: 715.656.7244
 Fax: 715.656.3013

Luther Park ECHOES From the Point

is published by the Luther Park Corporation, a non-profit organization affiliated with congregations of the Evangelical Lutheran Church in America (ELCA), and other Lutheran congregations, to share the news and ministry of Luther Park Camping and Retreat Center with campers and friends of Luther Park. The camp is located at 30376 Lakes Drive, Danbury, WI 54830.

Editor/Writer/Designer/Photographer: **Janet Nelson/Tom Nelson** (tomdesign@comcast.net)

Pictures, information and opinions are welcomed and encouraged. Call or send to:
 Luther Park 30376 Lakes Dr., Danbury, WI 84830, Phone: 612-987-6628.

YEAR-ROUND STAFF MEMBERS

- | | |
|---|---|
| <i>Joleen Clendening, Kitchen Staff</i> | <i>Joel Legred, Executive Director</i> |
| <i>Rhonda DeMars, Kitchen Staff</i> | <i>Leah McDougall, Program Director</i> |
| <i>Craig Larson, Site Director</i> | <i>Anna Treague, Associate Director</i> |

YEAR-ROUND VOLUNTEERS

- Pete and Marcia Brace*
Eric and Marlene Zaraza

Fun Times at Open House!

This year's annual Open House was held on July 15 on a perfect summer day with warm temperatures and sunny skies. Guests were welcomed with the cheerful smiles of the staff and treated to coffee, juice and rolls.

An inspiring worship service was led by the Luther Park counselors at the beautiful Outdoor Chapel, which now has electricity thanks to Roger King. It's always so inspiring to worship outdoors surrounded by God's creations.

Following the worship service, the Bikeathon participants pedaled into camp, cross toilet paper streamers amid the cheers of the staff and guests, tired but feeling accomplished. Thank you to all the riders for their support of Luther Park and the scholarship fund.

Prior to lunch, the Outstanding Christian Service Award was presented to year-round volunteers Pete and Marcia Brace for their continued support of Luther Park. They have given many hours of their time to the camp. We are so thankful for their dedication.

Of course lunch was delicious as usual, with a buffet of a variety of salads, sandwiches, fruits and vegetables. And of course tasty desserts! Thank you to the kitchen staff!

Guests spent the afternoon taking pontoon rides, swimming, paddle boarding, and touring the camp. Golf cart tours were available for those who preferred to ride around the camp! They also enjoyed an afternoon ice cream treat!

Next year's Open House will be a celebration of several important milestones. Luther Park's 60th anniversary will be celebrated as well as Joel's 30th anniversary as Director of the camp AND his 60th birthday! The Bethel Adult and Family Retreat Center will also be nearing completion! **Put Saturday, July 14 on your calendars now to join in the festivities!**



Pete and Marcia Brace receiving the Outstanding Christian Service Award from Joel Legred, Luther Park Executive Director

Surprise Guests at Open House!

Julie and Mark Manfred decided to stop by Luther Park on Saturday, July 15. Little did they know that it was the annual Open House! God must have had a hand in that just as God had a hand in bringing them together in 1961 at the age of 16 at Luther Park. They fell in love and eventually married. And they just celebrated their 50th wedding anniversary on October 14 of this year!



Julie and Mark were delighted to see Joel and reminisce about old times at Luther Park. They were quite impressed with the continued mission of Luther Park and wanted to support that mission with a generous donation.

Thank you so much, Julie and Mark, for your generous donation and support of Luther Park. **And congratulations on your 50th wedding anniversary!**



Julie and Mark Manfred

Summer Camp Theme for 2018: "This Changes Everything" (cont. from pg.1)

Full Week Treehouse Camp: (Grades 3-6): Known as All God's Critters, campers experience all the resources Luther Park has to offer with hands-on environmental education activities relating to all of God's creations. Youth spend a week in rugged tree houses, working together to grow in their relationship with God, the environment and each other. This adventure will challenge you in all aspects of your life. You will have the opportunity to cook over an open fire, explore, get dirty, get away from the crowd and have a ton of fun in God's great outdoors. A bathhouse with flush toilets, hot and cold running water and showers are available.



they will be working with and also become familiar with the programming before they meet the campers. This is a great opportunity for future resumes, volunteer experiences and jobs. After their training, they may be invited to come back for a free week as a helper in a cabin to put their training into practice.

Grandparent/Grandchild Camp (Thursday-Sunday): Grandparents and grandchildren spend time together exploring God's creations, diving into the summer theme and sharing each other's stories. A great way to bond with your grandchildren (and grandparent!).

Family Camp (Friday-Monday): Spend time with your family exploring God's creations, growing closer together and discovering more about each other and God. There will be plenty of opportunities to do fun activities together, but also time for parents to spend time talking about the joys and struggles of parenting while the kids connect with each other and summer staff. These are just some of the opportunities Luther Park offers this summer. **Come and join in the fun!** 🏕️

Full Week Tree House Camp: (Grades 7-9): Known as Night Owl Camp, campers experience all that the Treehouse Village has to offer, but in a new "light". See and hear the sights and sounds of the great north woods in the dark, by staying up late and, of course, sleeping in! Campers will also enjoy a day river trip, weather permitting. All the normal treehouse experiences with a twist.

Leadership Training Retreat: (Grades 9-12): Before camp starts we invite high schoolers interested in becoming camp leaders to come for a weekend training. This gives leadership trainers, called LT's, the chance to know the staff



Couple Donates \$150,000+ Life Insurance Policy - Another Way to Donate to Luther Park!

Luther Park celebrates the receipt of a generous \$150,000+ life insurance policy from a couple who wishes to remain anonymous. The policy also has \$50,000 of cash value, which was available for the camp to borrow for the building of the much anticipated retreat center. The camp can pay this amount back to have it available at another time, or can just have it be deducted from the total policy amount at the time the camp receives the policy proceeds. The couple will continue to pay the premiums so there is no extra cost to the camp for maintaining the investment.

The most tax-effective way to donate life insurance is to transfer the policy so that the charity becomes the owner and beneficiary. The donor is entitled to an immediate charitable deduction for income tax purposes. If the donor continues to pay the premiums, each payment is also a deductible charitable donation. Just contact your agent to get more information or if you are interested in making this happen. You can also contact Joel Legred at 612-987-6628 or jlegred@lutherpark.com if you would like more information.

Think about resources you have that you may no longer need. Your generosity will continue the incredible ministry that is Luther Park Bible Camp. 🏕️



YOUR LEGACY TODAY

Ideas for leaving a lasting legacy at Luther Park

Now Make A Gift From Your IRA!

Are you 70 1/2 years old or older? Do you have an IRA?

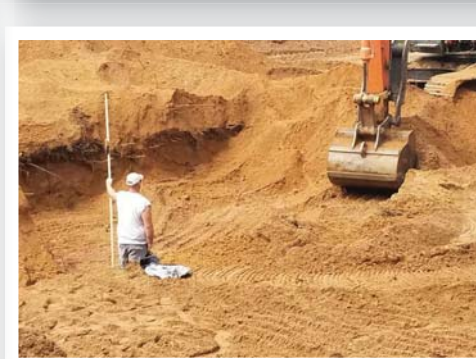
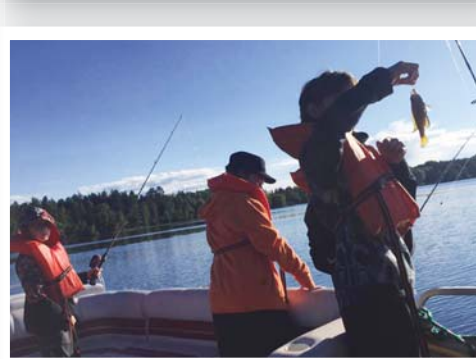
If you answered "yes" to both of these questions, you are eligible to provide up to \$100,000 in charitable gifts directly from your IRA. Under this law, gifts distributed directly to a charity from your IRA are excluded from your taxable income, but may be used to satisfy a portion of your required annual minimum IRA distribution.

Think about consulting your financial advisor for individual advice on this opportunity.



LUTHER PARK 2017 WHAT A SUMMER IT WAS!

Thank you to the many volunteers and donors for making these memories happen
- Luther Park Board of Directors and Staff



EXCITING TIMES AHEAD!!

Bethel Family and Adult Retreat Center set to open Fall 2018

2018 Summer Camp – “This Changes Everything”

“For by grace you have been saved through faith, and this is not your own doing; it is the gift of God.” (Ephesians 2:8)

Register by January 15, 2018 - **SAVE \$25 for Half Weekers and \$50 for Full Weekers!!**

Register by March 1, 2018 - **SAVE \$15 for Half Weekers and \$25 for Full Weekers!** • Register online now!

Date	Ages	Program
PRE-SUMMER		
May 27-30	Leadership Staff Training	
May 30-June 10	Summer Staff Training	
June 10-13	TBD	TBD
June 14-17	Grades 9-12	Leadership Training Camp
WEEK 1		
June 17-20	Grades 1-4	Half Week Cabin Camp
June 17-22	Grades 3-6	Full Week Cabin Camp
June 17-22	Grades 7-9	Full Week Treehouse Camp
WEEK 2		
June 24-29	Reserved for Good Shepherd – Inver Grove Heights	Full Week Cabin Camp and Treehouse Camp
WEEK 3		
July 5-8	All Ages!	Grandparents & Grandchildren Cabin Camp
WEEK 4		
July 8-13	Grades 3-6	Full Week Treehouse Camp
July 8-13	Grades 7-12	Cabin Camp
OPEN HOUSE July 14	All ages, All Day!	10am-4pm – full of camp activities & fun!
WEEK 5		
July 15-20	Grades 3-6	Full Week Treehouse Camp
July 15-20	Grades 7-12	Mission Trip Cabin Camp
WEEK 6		
July 22-25	Grades 1-4	Half Week Cabin Camp
July 22-27	Grades 3-6	Full Week Cabin Camp
July 22-27	Grades 7-9	Full Week Treehouse Camp
WEEK 7		
July 27-30	All Ages!	Family Cabin Camp
July 31- August 3	Reserved for Mount Calvary – Excelsior	

Full Week Treehouse Camp (Grades 3-6)

Known as All God’s Critters to many, campers experience all the natural resources Luther Park has to offer with hands-on environmental education activities relating to all of God’s creations. Youth spend a week in rugged tree houses, working together to grow in a relationship with God, the environment and each other. This adventure will challenge and strengthen you in all aspects of your life. You will have the opportunity to cook over an open fire, explore, get dirty, get away from the crowd and have a ton of fun in God’s great outdoors! A bathroom with flush toilets, hot and cold running water, and showers is available.

Full Week Treehouse Camp (Grades 7-9)

Known as Night Owl Camp to many, campers experience all that Treehouse Village has to offer but in a new “light.” See and hear the sights and sounds of the great north woods in the dark, by staying up late and, of course, sleeping in. Campers also will enjoy a day river trip, weather permitting. All normal tree house experiences just with a twist. See above for more specific details of Treehouse camp.

Great Lakes Mission Trip

All the experience of camp and a mission trip in one week. Travel with your group to a mission site each day and spend the evening doing camp activities like games, Bible studies and campfire! Group registration only. If you are looking for a mission trip experience as an individual, register for week 5.

How to Register:

Go paperless & register online at www.lutherpark.com or printout, complete, sign the registration & health form and return to; Luther Park Camping and Retreat Center
30376 Lakes Drive
Danbury, WI 54830

Select a program based on the grade your camper will complete in June 2018.

\$200 deposit due upon registration.

Upon receipt of your registration, directions & other camp info will be emailed to you.

Final payment is due two weeks prior to arrival at camp.

Take advantage of early registration discounts

SPECIAL OFFER! Sign up for a second week (of equal or lesser value) for half price.

Check with your church about camp scholarships.

If you have questions, please contact us by phone at 715-656-7244 or email at camp@lutherpark.com

Register Early!
Some weeks fill quickly.
Register by:
January 15, 2018
**Save \$25 for Half Weekers
and \$50 for Full Weekers!!**
March 1, 2018
**Save \$15 for Half Weekers
and \$25 for Full Weekers!**

Fee Schedule:	Member	*Non-member
Half Week	\$325	\$345
Full Week	\$450	\$470
Sr. High Leadership Intensive (Includes one free additional week)	\$390	\$410
Great Lakes Mission	Negotiable	

NOTE: Camper fees shown are subsidized by gift allocations. The actual cost per week is about \$600.

* Non-member churches are those that are not members of Luther Park Corporation.

Fees cover meals, lodging and all program materials, except in campground

Campground	\$18 per site/ per night	\$20 with electricity
------------	-----------------------------	--------------------------

Luther Park Wish List

Listed below are some of the camps current needs. Perhaps you don’t have any of these items on hand, but could give a special gift or a gift in honor or memory of someone.

To contribute toward any of these items, just make a check out to Luther Park and note your wishes and mail to: Luther Park, 30376 Lakes Drive, Danbury WI 54830-9508

URGENT NEEDS

- 3/4 ton pickup truck & plow
- 1/2 ton snow plow
- Reliable passenger car/van
- Dehumidifiers
- Four-wheeler
- \$20.00 Gas Cards (Prefer Super America but can use all cards)

SPECIAL NEEDS

- Bag-less Vacuums
- New or gently used deck chairs and tables
- Ceiling Fans (new or gently used) for the Welcome Center bedrooms

MAINTENANCE

- Rakes
- Shovels
- Nuts, bolts, screws and nails of assorted sizes
- LED lightbulbs
- Chain Saws
- Wire-Feed welder
- Solar lights for along paths
- Work gloves
- Weed Whips
- Screen for windows
- Chains for chain saws

KITCHEN

- Big frying pans
- PROGRAM**
- Projector with HDMI input
 - Spark Story Bibles
 - Clipboards (15-20)
 - Battery Powered Pillar Candles
 - Battery Powered Votive Candles
 - Taper Candles (to burn)
 - Permanent markers
 - Scrapbook Paper
 - Markers or Colored Pencils (no crayons, please)
 - Pencil Boxes
 - Boxes of “duraflame firestart” for starting campfires
 - Soft Dodgeballs
 - Soccer Nets (2 - 12x6)
 - Kayak Paddles
 - New or Gently Used Canoes
 - New or Gently Used Tents
 - Solar Powered Lanterns

OFFICE

- Laminating sheets for GBC Laminating machine
- Copy paper (white and colored)
- Card Stock (white and colored)
- Poster Board
- Bulletin boards for cabins
- White boards & markers
- Batteries (D, AA, AAA, CR2032)

HOUSEKEEPING

- New pillows
- New Sleeping Bags
- Twin and Queen Size sheets
- Shower curtains

Thanks for gifts given in 2017!

2018 Summer Staff Ministry Team

Applications for the 2018 Summer Staff Ministry Team are now available! Camp provides a meaningful space for young adults to explore their faith, work with children and youth, gain experience for life and future jobs, as well as make long-lasting friendships! If you or someone you know is interested in joining the summer staff, please visit www.lutherpark.com and click on the Staff tab. You can also call 715-656-7244 or e-mail programdirector@lutherpark.com



Using Pedal Power, Bikeathons Raise Money for Luther Park Campers!

The participants of the 2017 Bikeathons pedaled their way to Luther Park from the Twin Cities to raise money for camp scholarships. No child is turned away from Luther Park because of an inability to pay.

Bikeathon 1 participants:

- Messiah: David Shirley, Tom Gustafson, Matt Settergren, Rod Nerdahl and George Settergren riding his balance bike!
Pat Shirley, Pastor Louise Britts, Peggy Nerdahl (sag wagon drivers)
- Zion: Jenna Yeakle, Matthew Frye
- Family of Christ: Donny Bergquist, Steve Klempe
- Lakeside: Adin Treague, riding from Danbury to camp on Sunday (new this year and the youngest ever!)
- Elim/Messiah: Linda Sandell

Bikeathon 2 participants were:

- Elim: Tom Nelson, Ann Tranvik, Stafford Gutknecht
- Elim/Messiah: Linda Sandell
- House of Prayer: Scott Wright, Steve Pierson

Bikeathon 3 and 4 participants

- Diamond Lake: Bob Kresse, Graydon Royce
- Christ Memorial: Pastor Rich Dahle-Koch, Gregg Ohman, Art Caple (sag wagon driver)

These Bikeathons raised \$20,045 for Luther Park's camp scholarships. Thank you to everyone that participated in these Bikeathons!

Bikeathon's 1 & 2 are scheduled next year for June 2-3 and July 13-14. Contact Joel Legred if you are interested in participating. 🏠



Margo Toth, from Budapest, Hungary, was an international counselor at Luther Park in the summer of 2017. Here is her reflection of her summer.

Leaving My Mark



Have you ever felt like you're asleep even though you are awake? This was how I felt until my summer at Luther Park. I was walking through life without much direction or awareness of who I was. In the beginning of summer our camp's executive director, Joel told me Luther Park is a special place. I didn't understand what he meant at first. As I settled in and got to know my fellow staff members and the whole Luther Park family, I became more and more aware of the uniqueness of Luther Park. Camp shaped me in so many ways and in such a short

amount of time. I got to try myself out in situations that freed my mind and gave me new opportunities for growth.

Experiencing camp for an entire summer was a blessing. Living so close to nature in the breathtaking landscape, the sight of calm (but wild) animals, the innocence of children and the people that surrounded me inspired me



to think more about life, love and God. It made me grow spiritually. It also gave me friends that really cared. Not one day passes by that I don't think of my American and international friends. The memories of deep conversations, camp games, joy and laughter I hold so close to my heart now.



Friendship, kindness, peace, faith and teamwork are just a few of the many important traits I acquired during my time at camp. Now when I think about those days, I realize Luther Park was my wake up call. Luther Park is a special place that is life changing for not only the campers but the staff members, too. This experience gave me inspiration and direction in my life. *My favorite part of this experience, however, is not only did Luther Park become a part of me, but I know I became a part of Luther Park too, as I left my own mark there as well.* 🏠

Margo Toth, Budapest, Hungary

Luther Park Retreat Ministry

A review of future retreat events for campers, retreaters and friends of Luther Park.

For more information contact Luther Park at 715-656-7244; email: retreats@lutherpark.com

WE NOW HAVE RELIABLE WIFI IN THE WELCOME CENTER, ELECTRONIC SCRAPBOOKERS ARE WELCOME TO JOIN US!

Announcing 2018 Programmed Retreats

Luther Park is a great place for a variety of retreats. All types of groups are invited - youth, men, women, quilters, confirmands and families to name a few-to head up to the North Woods for a relaxing/exciting weekend. Mid-week retreats are also welcome for a reduced rate and retreat planning assistance is available.

"Luther Park is a place to relax, rejuvenate and spend time with friends surrounded by the beauty of God's creation."

Luther Park Weekend Retreater

Here are some upcoming programmed retreats at Luther Park:

Scrapbooking and Stamping Retreat Weekends

- Winter Scrapbooking and Stamping Weekend I, February 1-4 or February 2-4, 2018
- Spring Scrapbooking and Stamping Weekend II, April 26-29 or April 27-29, 2018
- Fall Scrapbooking and Stamping Weekend III, November 8-11 or November 9-11, 2018

Scrapbooking Retreat Costs

- Thursday-Sunday Option \$125.00
- Friday-Sunday Option \$95.00

To register, please complete the attached form and return it with your \$50.00 deposit to: Scrapbooking & Stamping Weekend, Anna Treague, 30376 Lakes Drive, Danbury, WI 54830

Watch for more retreats that may be added this Winter and Spring. And remember-you can choose your own times and program your own retreats. Luther Park will be happy to assist you in anyway!

Just ask!

To book a retreat or to see what opportunities Luther Park can provide for your next retreat, please call; Luther Park at 715-656-7244 or e-mail; retreats@lutherpark.com

Remember, Luther Park is not just for summer activities! We are open year round. Join us for some fun, fresh ideas to jazz up those winter blues. Bring a friend, church group, or come alone. Don't miss out on a great winter weekend!

LUTHER PARK SCRAPBOOK & STAMPING CAMP WEEKEND REGISTRATION FORM

Retreater(s) Name(s): _____ Age: _____ Gender: _____
 Spouse (If applicable): _____ (optional for adults)

Registering for:
 Winter Scrapbooking & Stamping Weekend I; Feb 1-4 or Feb 2-4, 2018 (Circle length option)
 Spring Scrapbooking & Stamping Weekend II; Apr 26-29 or Apr 27-29, 2018 (Circle length option)
 Fall Scrapbooking & Stamping Weekend III; Nov 8-11 or Nov 9-11, 2018 (Circle length option)

Congregation: _____ Names of preferred roommates(s): _____
 Address: _____ City: _____ State: _____ Zip: _____
 Home Phone: _____ Work Phone: _____ Email: _____
 Emergency Contact: _____ Emergency Phone: _____

Weekend Fees: Thursday option is \$125 and Friday option is \$95 per person
 Total Price: _____ Please send a deposit of half the total amount when registering.
 Deposit Amount: _____

Method of Payment:
 Check/Money Order: Make Payable to Luther Park Camping & Retreat Center
 Visa Master Card AMEX

Acct. # _____ Exp _____
 CSC #(3 or 4 digit number on card) _____ Signature _____

THIS AUTHORIZATION MUST BE COMPLETED AND SIGNED BY PARTICIPANT.
 I understand that unless I provide separate written notice, photos taken of myself at camp may be used for camp-approved publications such as the Luther Park Echoes. Please list ALL allergies & dietary restrictions so we are better able to provide you with the best service possible.

 Signed: _____ Date _____



A Message From The Executive Director

Joel Legred



UNSUNG HEROES

"I do not cease to give thanks for you as I remember you in my prayers" (Ephesians 1:16).

Unsung heroes are everywhere. They seem to show up just when they are needed after natural disasters, fires, and flooding. It reminds me to give thanks for the wonderful people who work behind the scenes at Luther Park.

Our maintenance and construction volunteers spend long hours repairing whatever needs fixing. Because of them, the lodge has a new steel roof, a new outdoor chapel graces our property, and a new paved road leads down to the cabins.

There are volunteers who regularly clear brush and chop wood. In fact, we have a Lumberjack weekend that we hope will become a semi-annual event.

We are blessed with a dedicated volunteer who is the friendly voice you hear on the phone and in the office. We also have wonderful year-round volunteers who help take care of maintenance and grounds.

Luther Park is fortunate to have a couple who gift their time with the summer brochure and other projects throughout

the year. They also gift their time picking up international summer staffers and hosting them in their home.

Even though they are off-site, church foundations regularly support specific projects and Thrivent provides grants for some volunteer weekends and special events.

Donors who may not be visible on-site provide regular financial support and give major gifts to capital projects like the retreat center.

Our staff are among these unsung heroes who work behind the scenes, making sure campers and retreaters feel they are valued and welcomed. Long before people arrive, staff are developing programs, getting spaces ready, and planning delicious meals. And after a group departs, these same staff are cleaning up and getting the camp ready to welcome newcomers.

Thank you for anything you may do from behind the scenes on behalf of Luther Park! *We praise God for you!*



Camp is where strangers become friends and friendships last forever.